

Articolo venduto separatamente  
Article vendu à part  
Article sold separately

ESSENTIAL  
125 CARTONGESSO 1 LASTRA  
150 CARTONGESSO 2 LASTRE

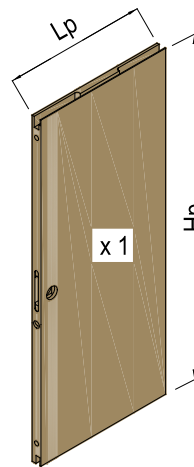
ESSENTIAL  
125 PLAQUES DE PLÂTRE 1 DALLE  
150 PLAQUES DE PLÂTRE 2 DALLES

ESSENTIAL  
125 PLASTERBOARD 1 PANEL  
150 PLASTERBOARD 2 PANELS

## ANTA ACUSTICA VANTAIL ACOUSTIQUE ACOUSTIC DOOR

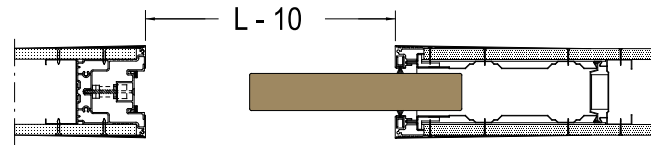
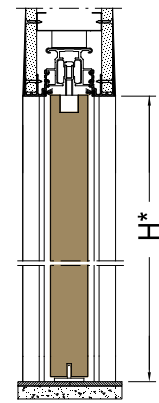
Articolo venduto separatamente  
Article vendu à part  
Article sold separately

LUCE COMMERCIALE	LUCE EFFETTIVA	ANTA
DIMENSION DE PASSAGE COMMERCIAL	DIMENSION DE PASSAGE RÉEL	VANTAIL
OPENING SIZE COMMERCIAL	OPENING SIZE EFFECTIVE	DOOR
L	L - 10	Lp = L + 15
600	590	615
700	690	715
800	790	815
900	890	915
1000	990	1015



\* VERIFICARE PRIMA DI ORDINARE LA PORTA  
\* VÉRIFIER AVANT DE COMMANDER LA PORTE  
\* CHECK BEFORE ORDERING THE DOOR

LUCE DIMENSION DE PASSAGE OPENING SIZE	ANTA VANTAIL DOOR
H	Hp = H - 6
2000*	1994
2045*	2039
2100*	2094



## KIT FERRAMENTA - KIT QUINCAILLERIE - HARDWARE KIT

Articolo venduto separatamente  
Article vendu à part  
Article sold separately

**a** 2 x

**b** 1 x

**c** 1 x

**d** 2 x

**e** 1 x

**f** 2 x

**g** 2 x

**h** 1 x

**i** 1 x

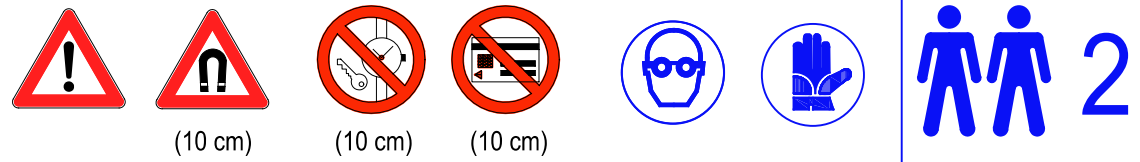
**l** 1 x

**m** 2 x

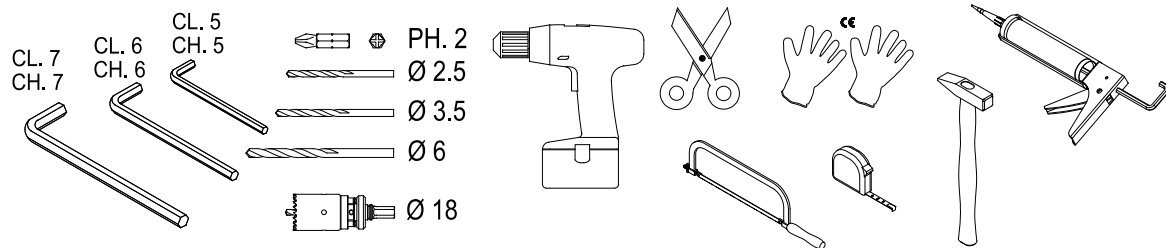
**n** 1 x

**o** 1 x

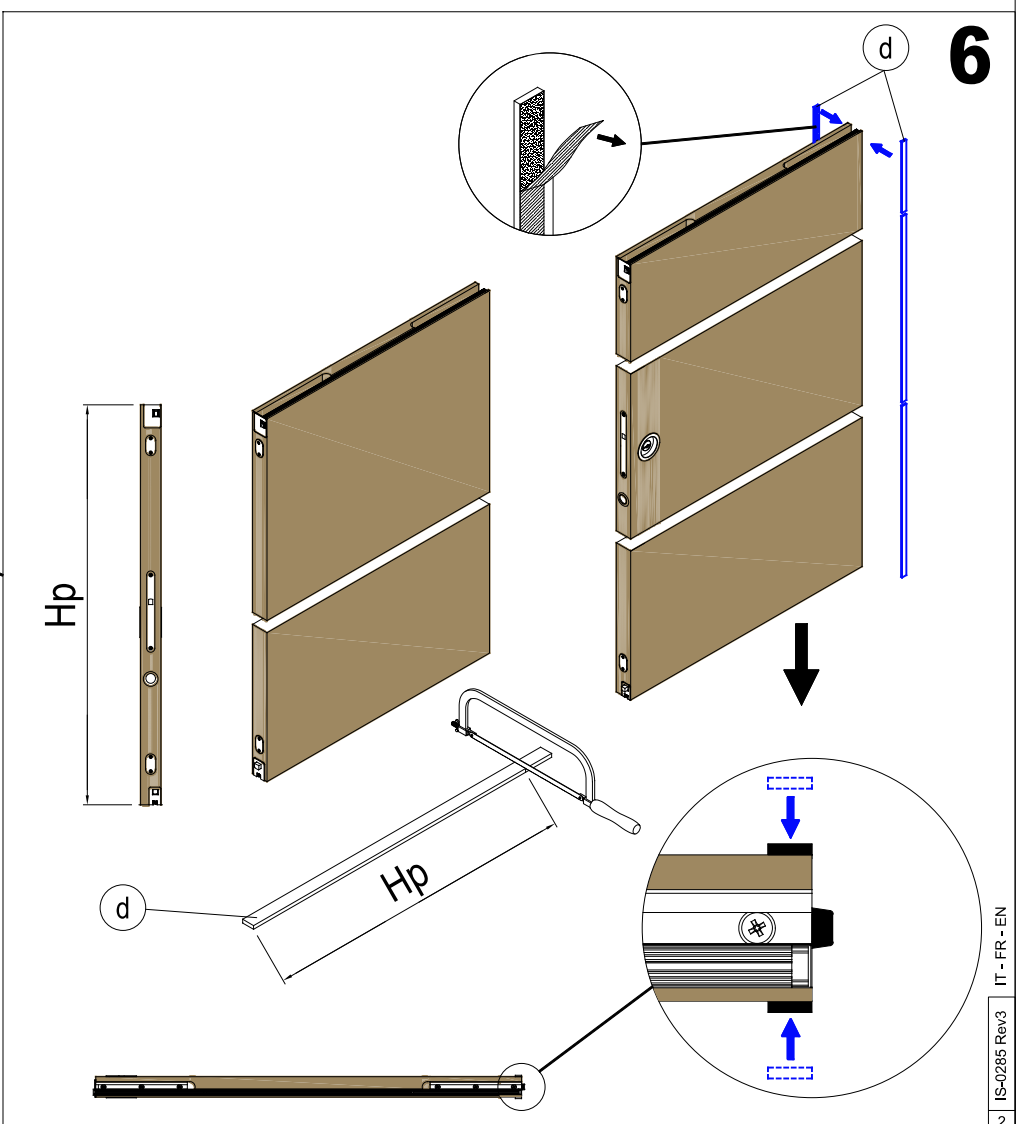
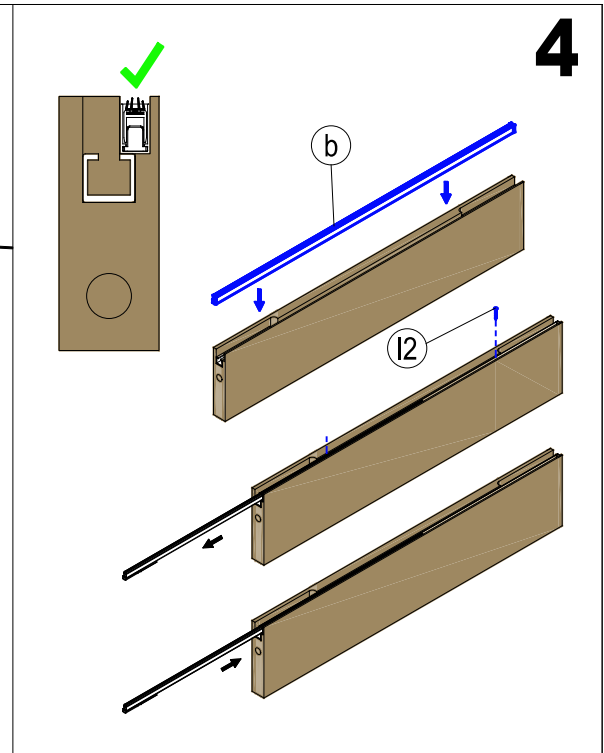
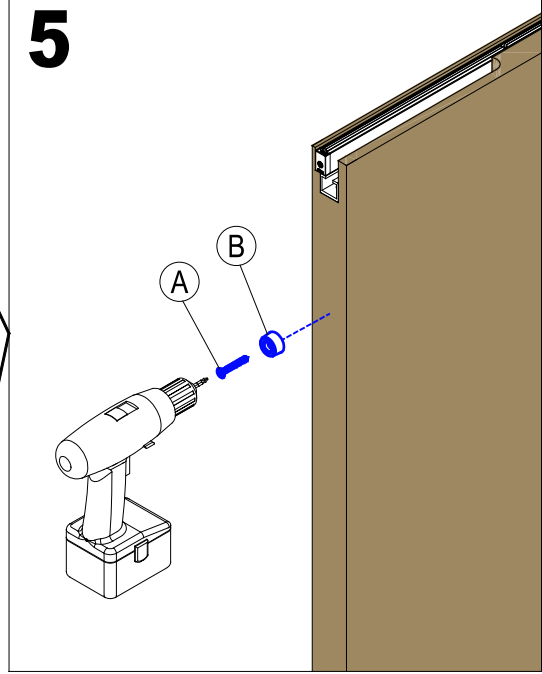
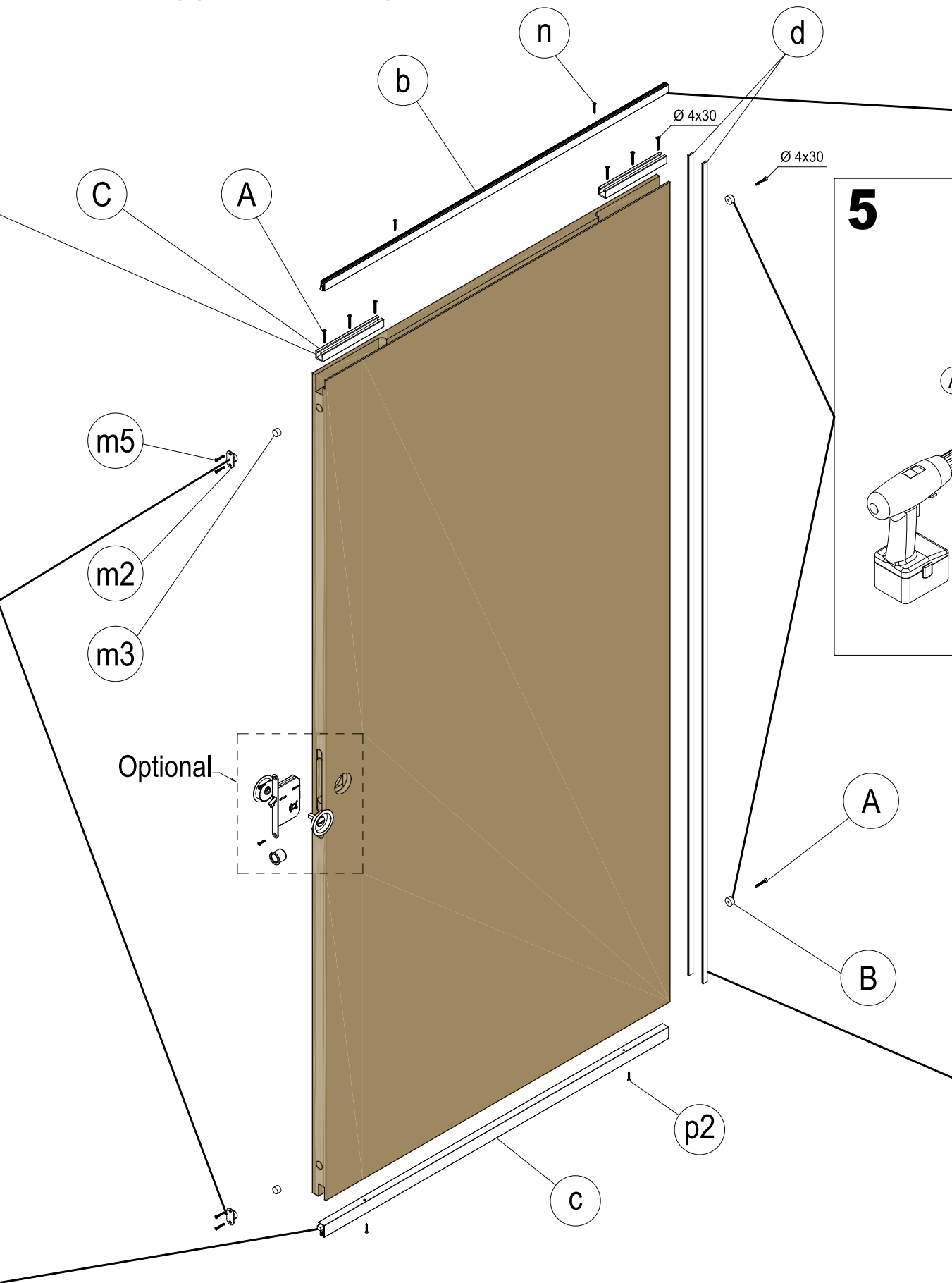
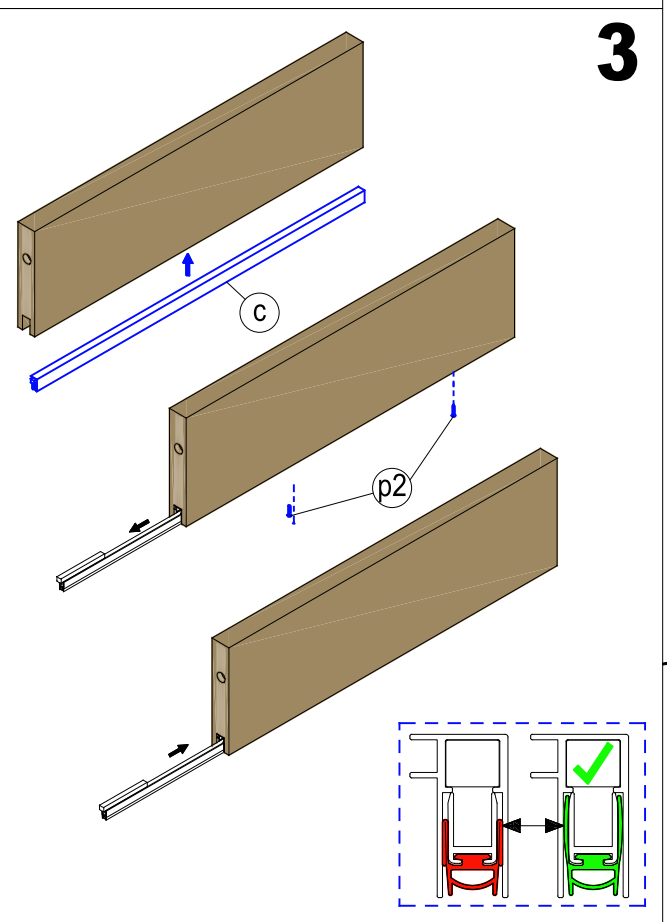
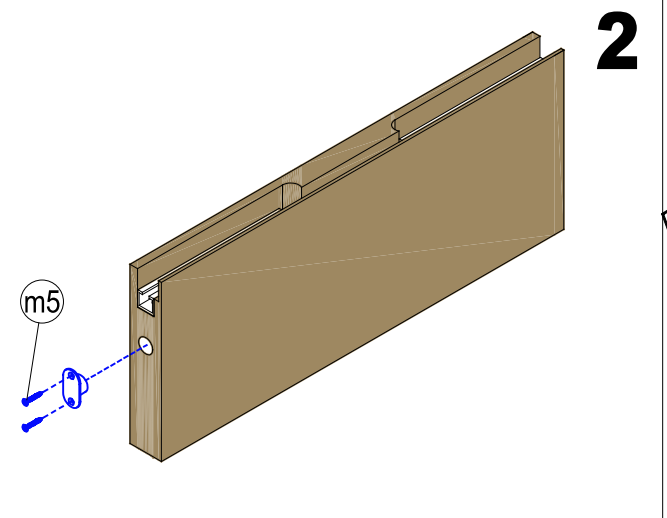
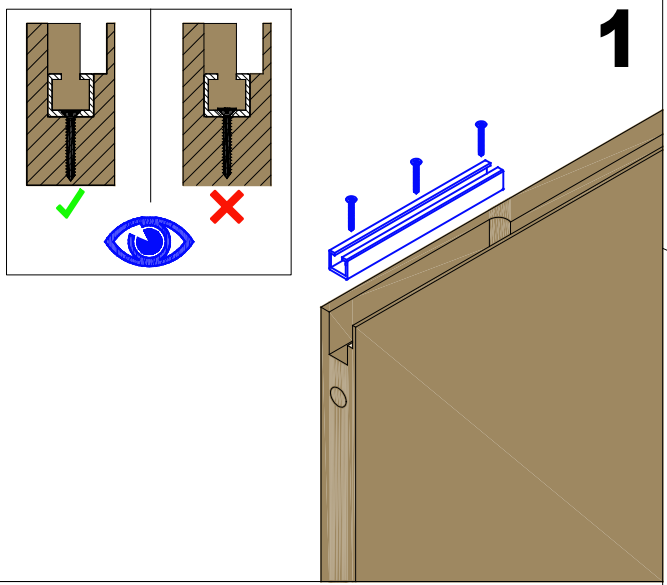
**p** 1 x



Nota: Test eseguito con telaio posato a regola d'arte, foro di passaggio 1000x2100 con kit chiudiscigno con serratura  
Remarque : Essai exécuté avec le châssis posé dans les règles de l'art, dimension de passage 1000x2100 avec kit Chuidiscigno avec serrure  
Note: Test done on a properly installed frame, 1000x2100 opening, Chuidiscigno kit with lock



PREPARAZIONE ANTA - PRÉPARATION VANTAIL - DOOR PREPARATION



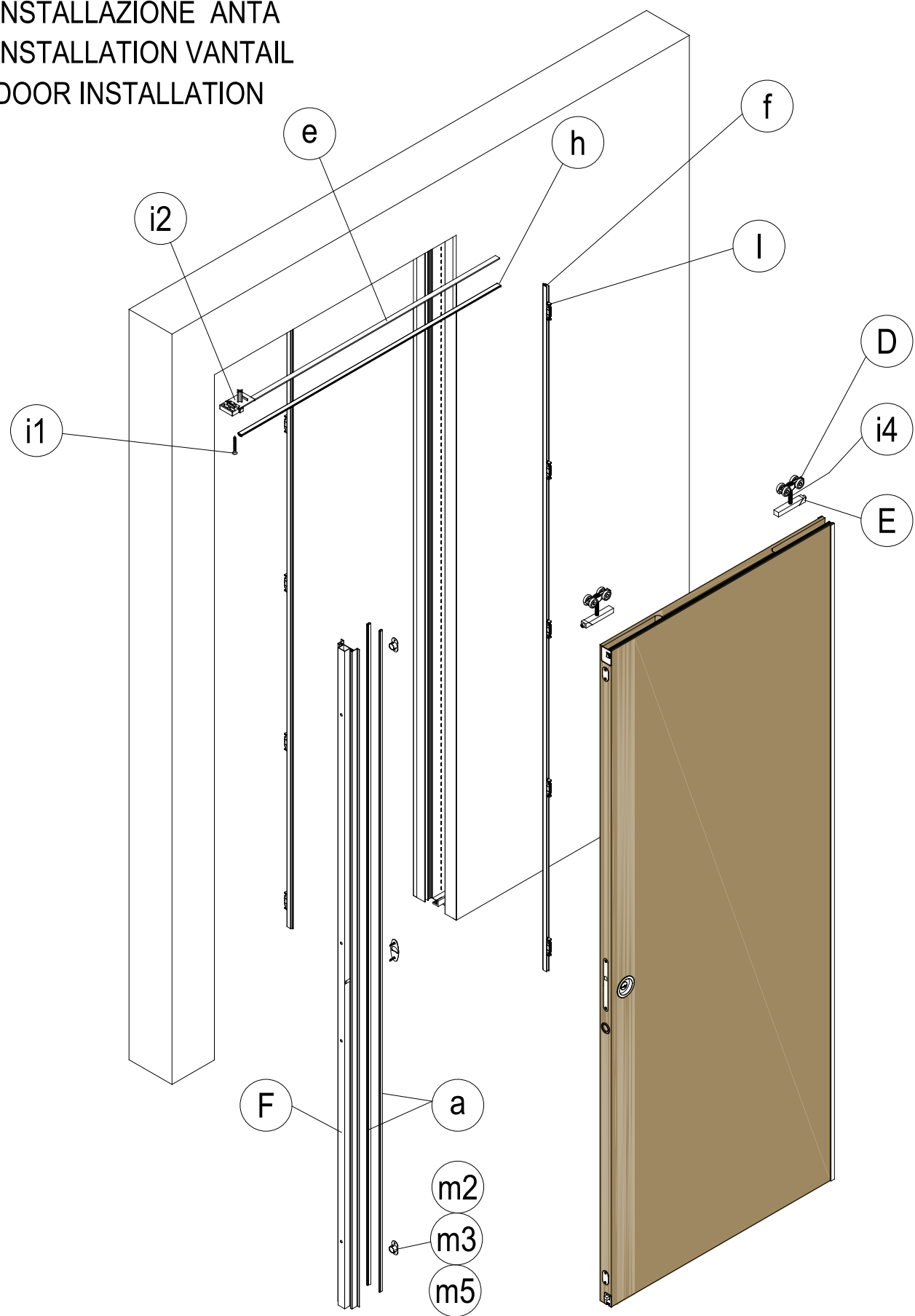
PRELEVARE I SEGUENTI ACCESSORI DALLA DOTAZIONE DEL CONTROTELAIO  
 PRÉLEVER LES ACCESSOIRES SUIVANTS DE LA DOTATION DU CONTRE-CHÂSSIS  
 PICK THE FOLLOWING ACCESSORIES FROM AMONG THOSE INCLUDED WITH THE FRAME

Ø 4x30  
 A x 8

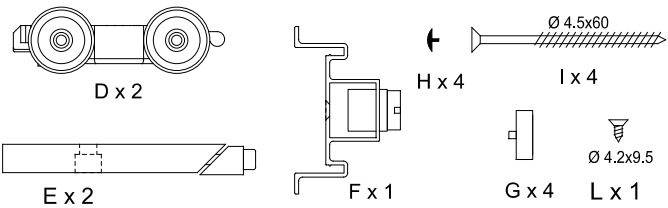
B x 2

C x 2

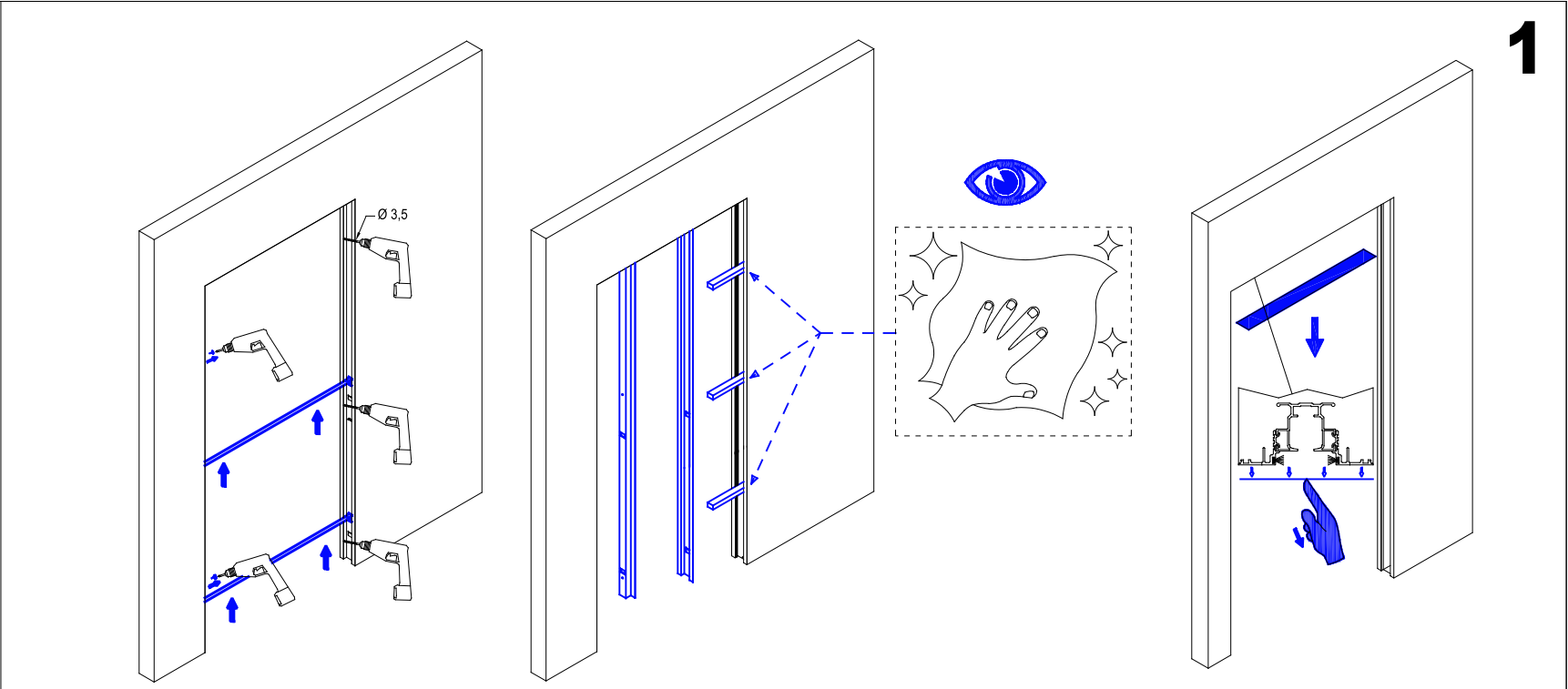
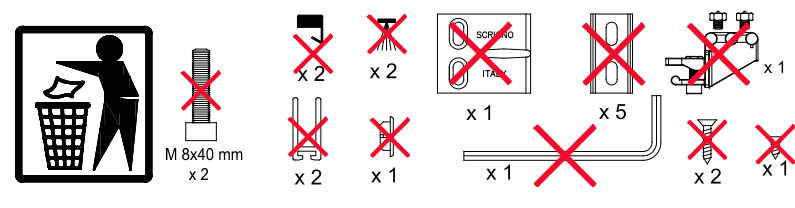
INSTALLAZIONE ANTA  
 INSTALLATION VANTAIL  
 DOOR INSTALLATION



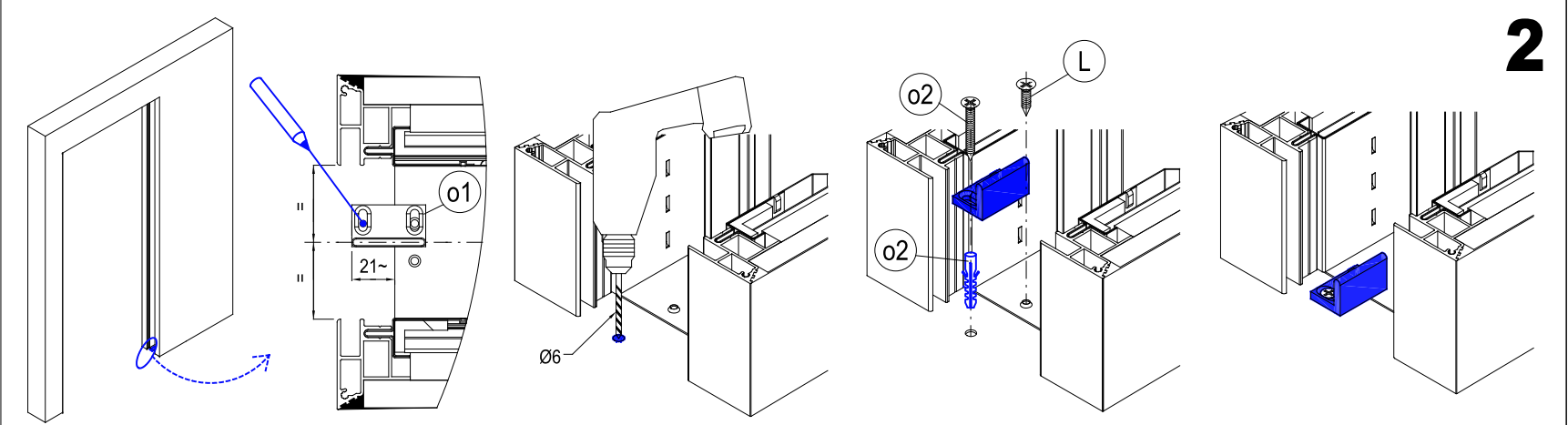
ACCESSORI DA PRELEVARE DALLA DOTAZIONE DEL CONTROTELAIO  
 ACCESSOIRES À PRÉLEVER DE LA DOTAZION DU CONTRE-CHÂSSIS  
 NECESSARY FRAME ACCESSORIES



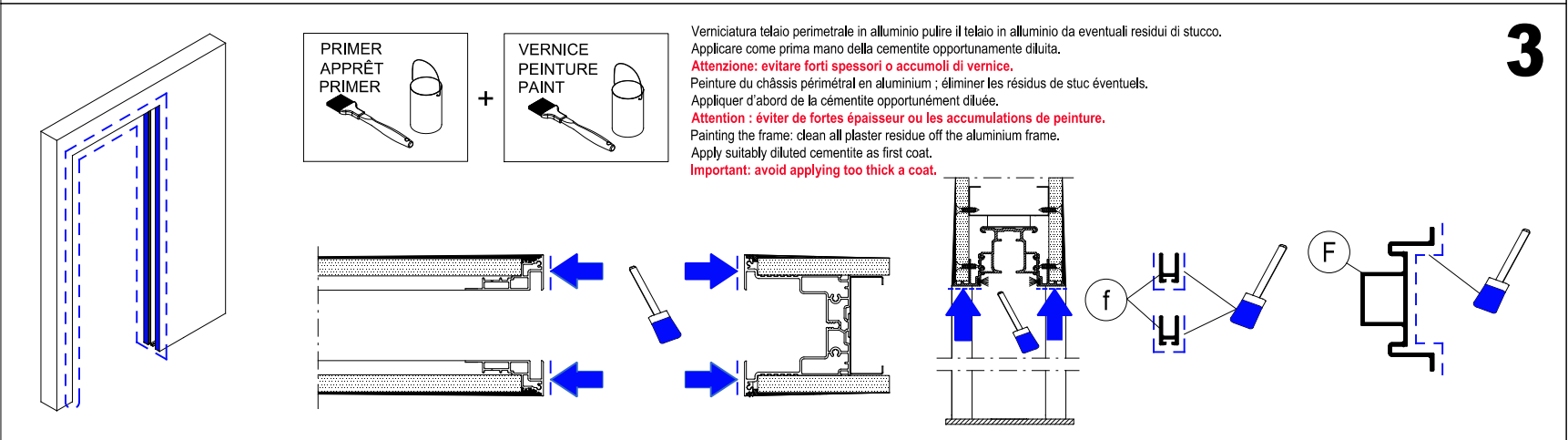
ACCESSORI NON NECESSARI  
 ACCESSOIRES NON NÉCESSAIRES  
 FRAME ACCESSORIES WHICH ARE NOT REQUIRED



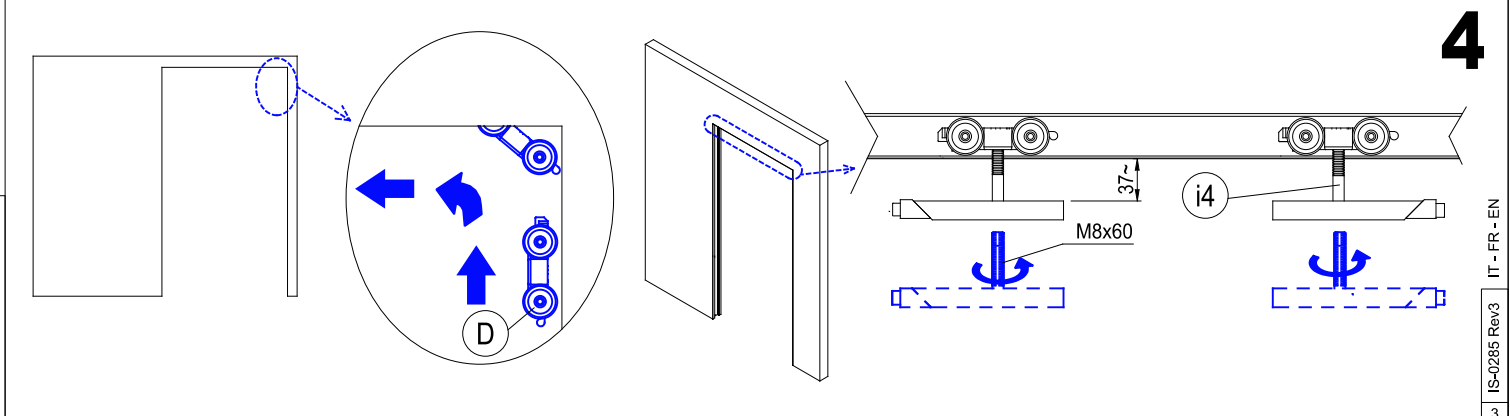
1



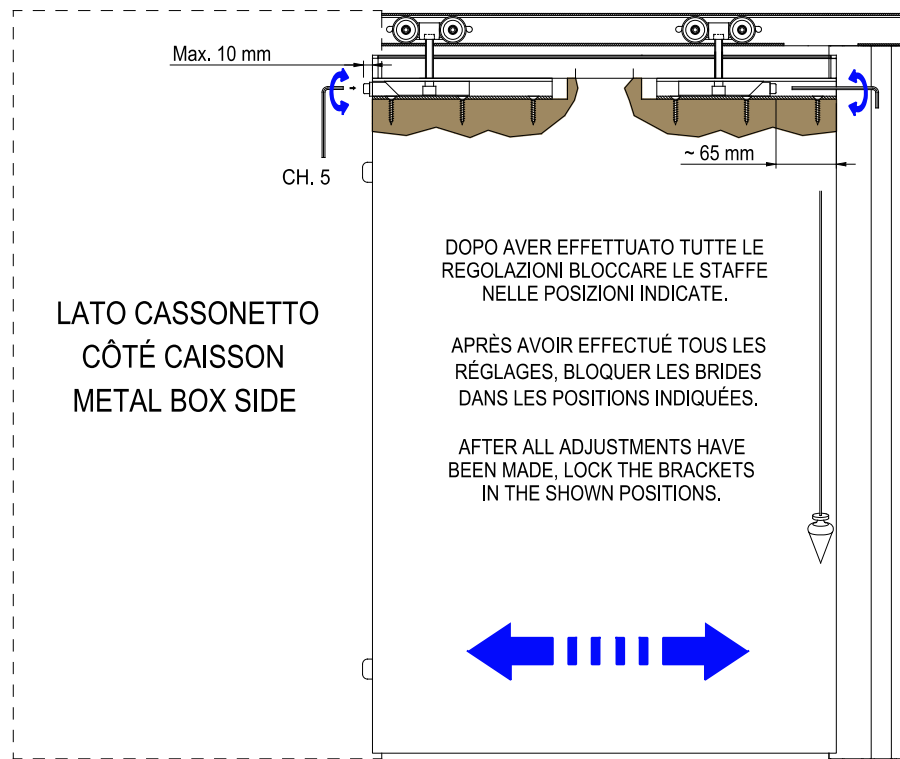
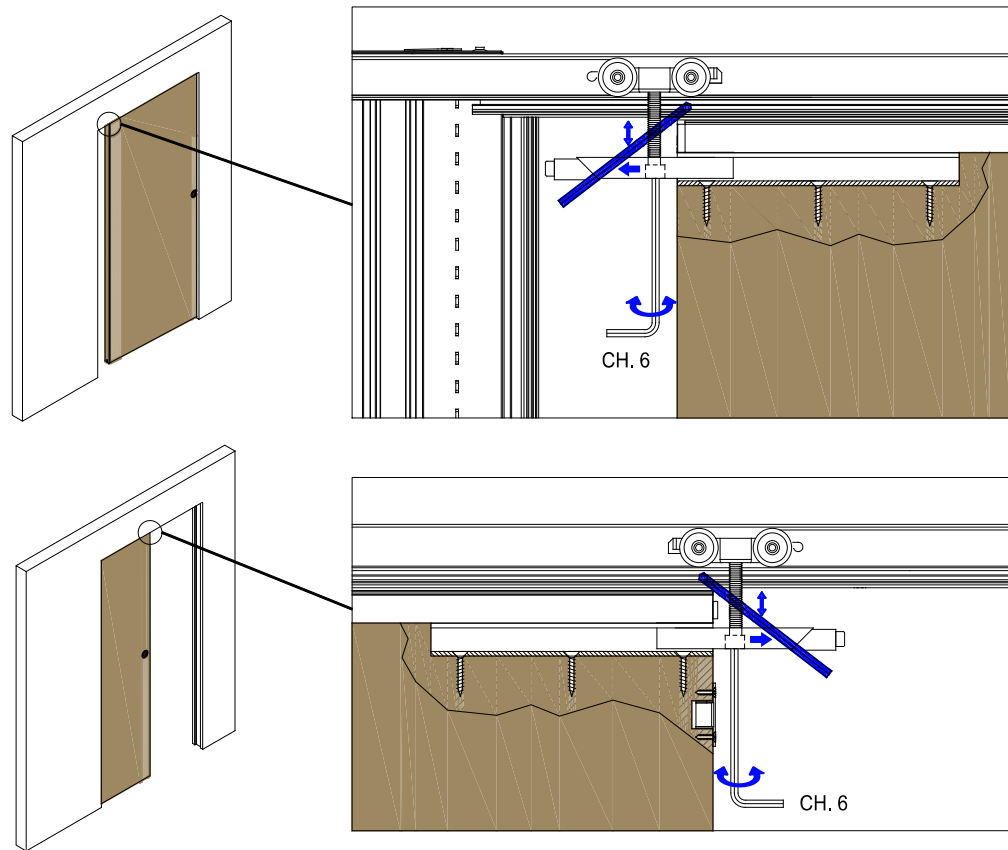
2



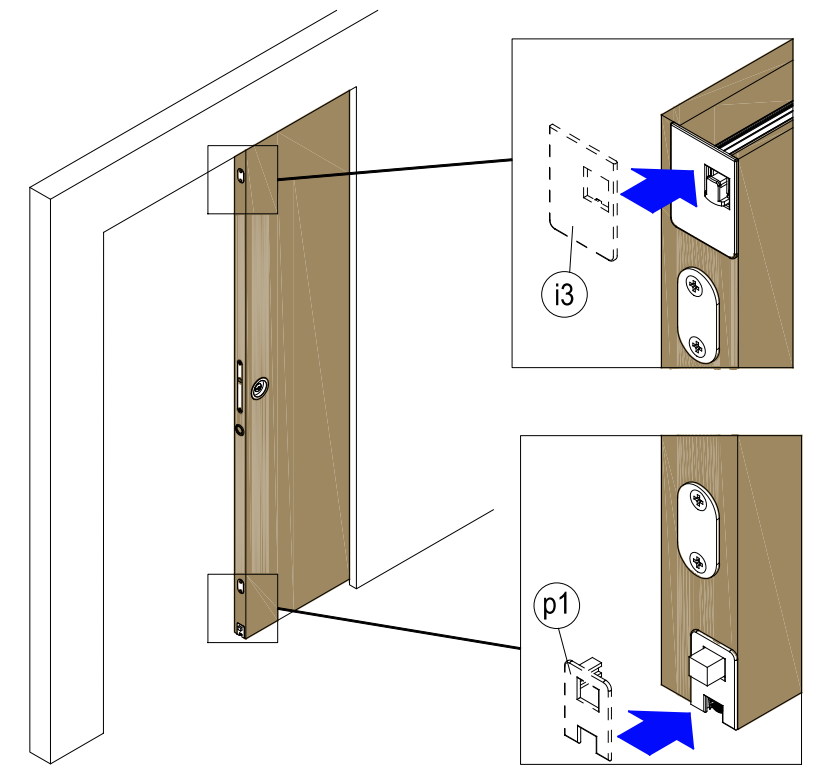
3



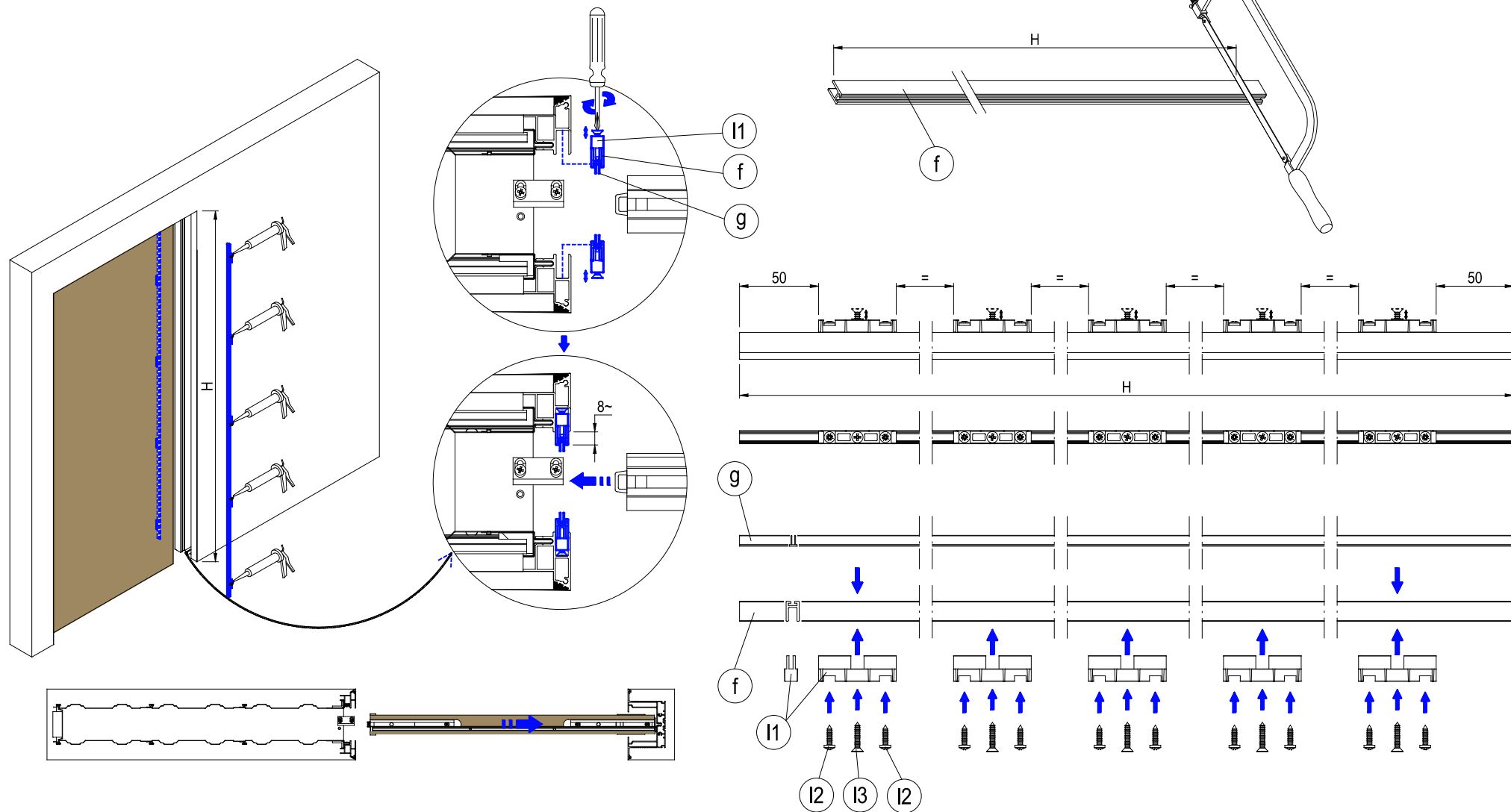
4



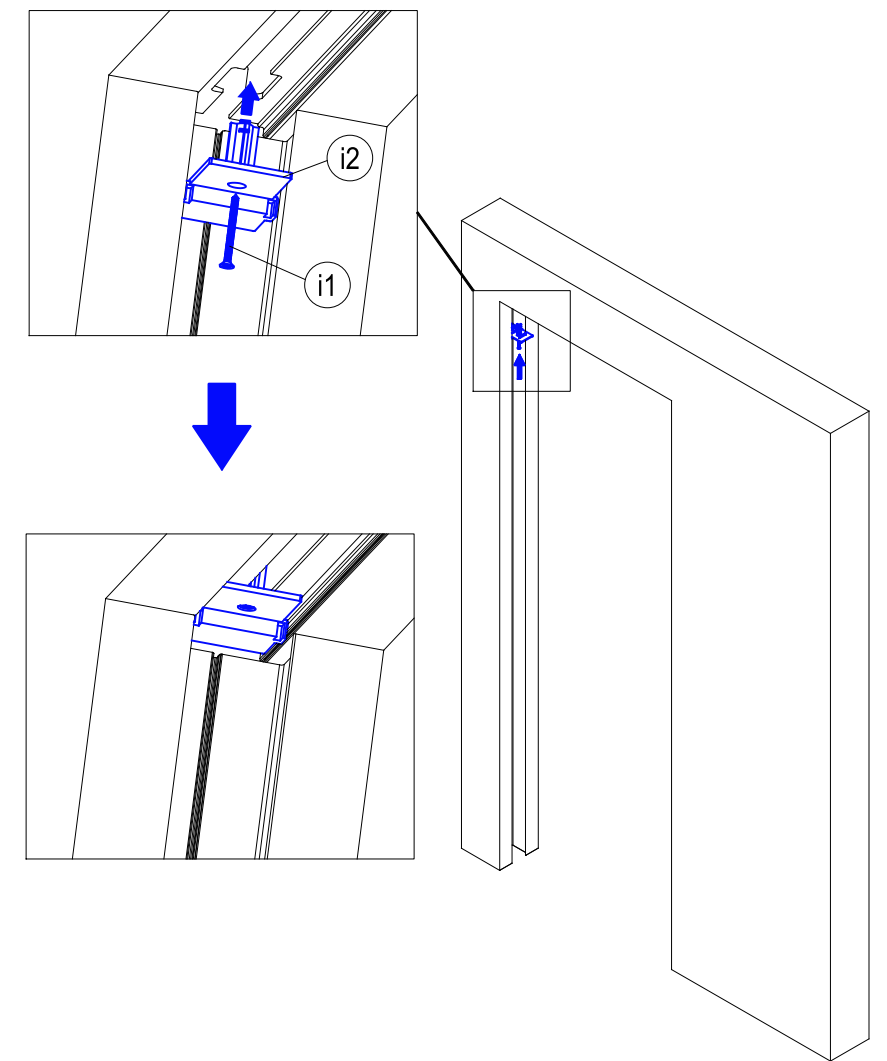
5



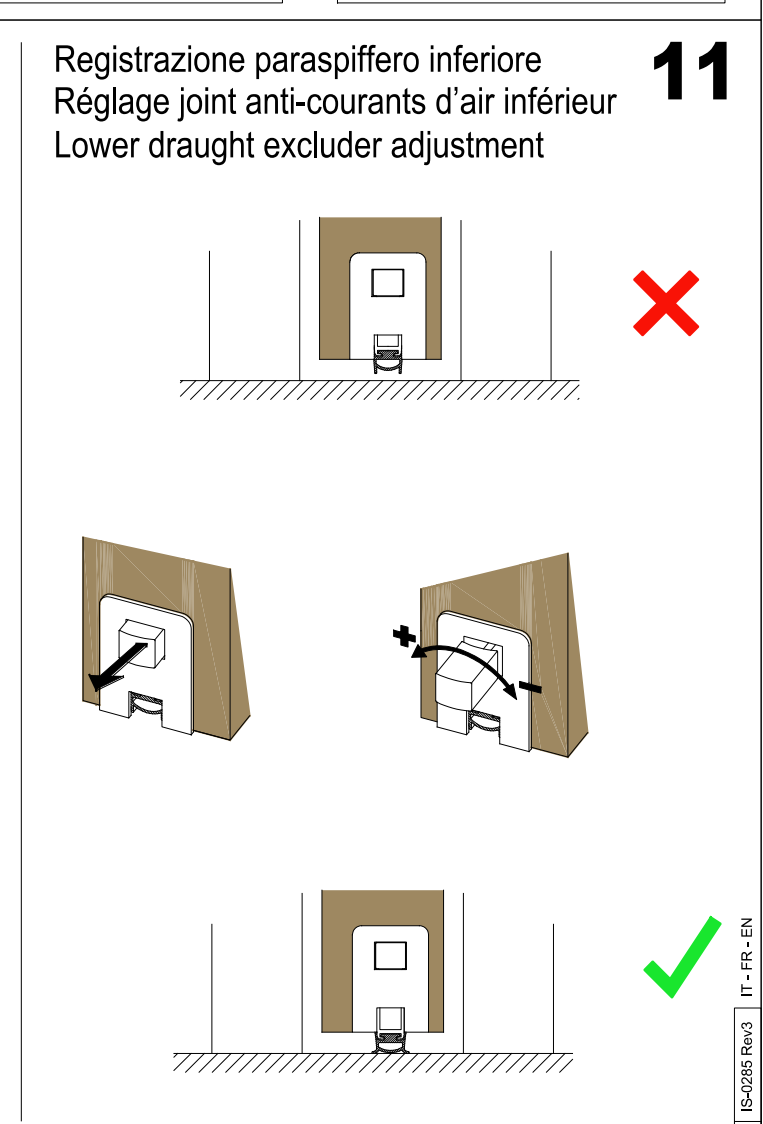
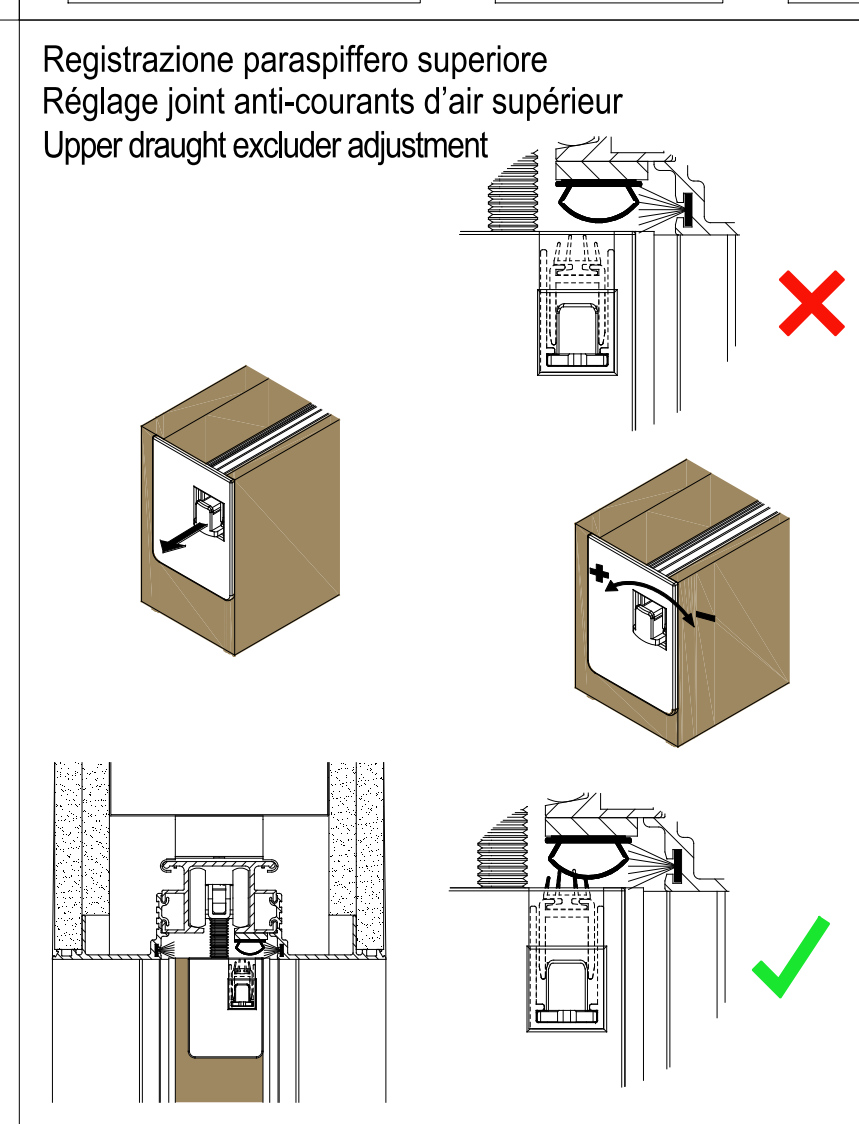
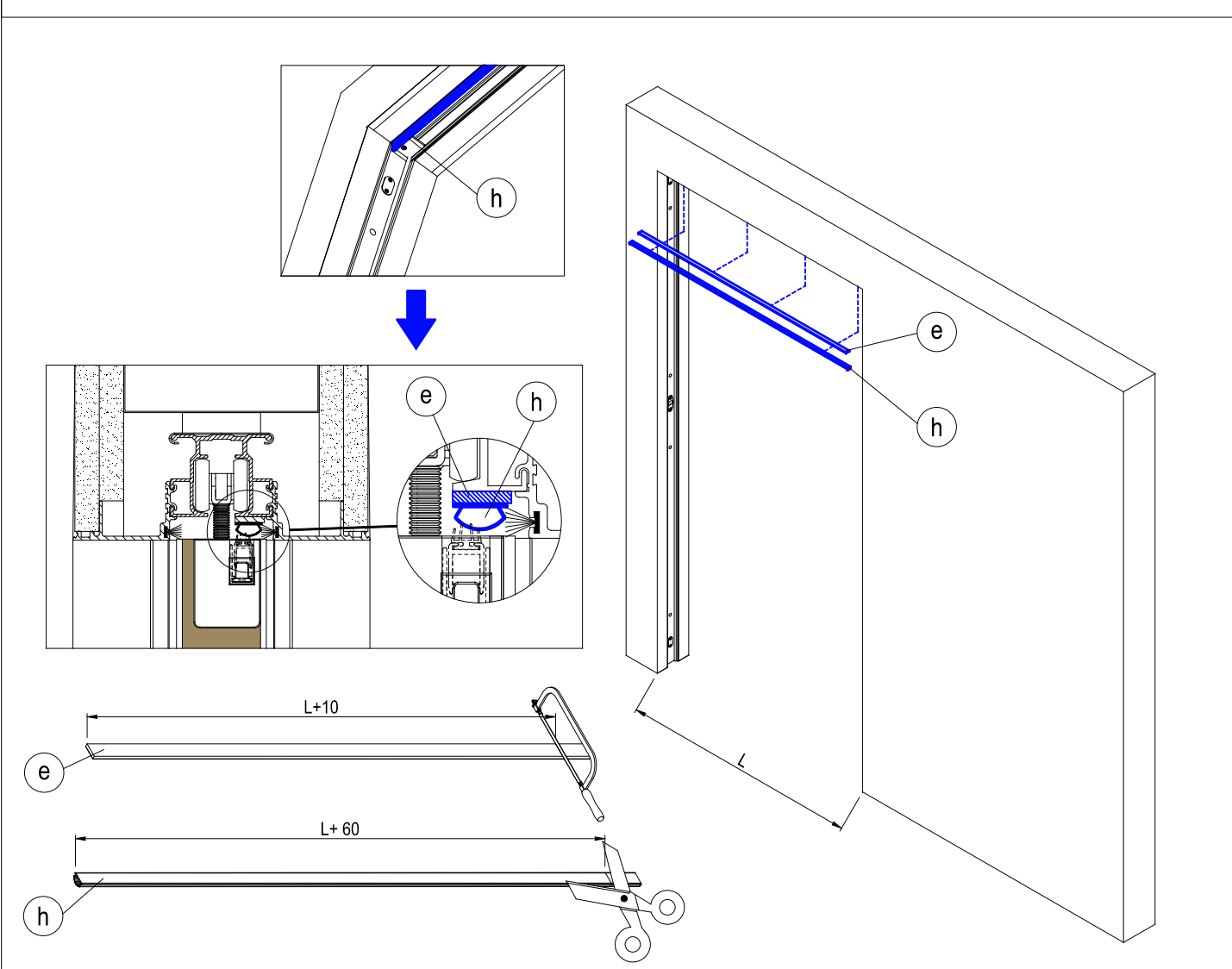
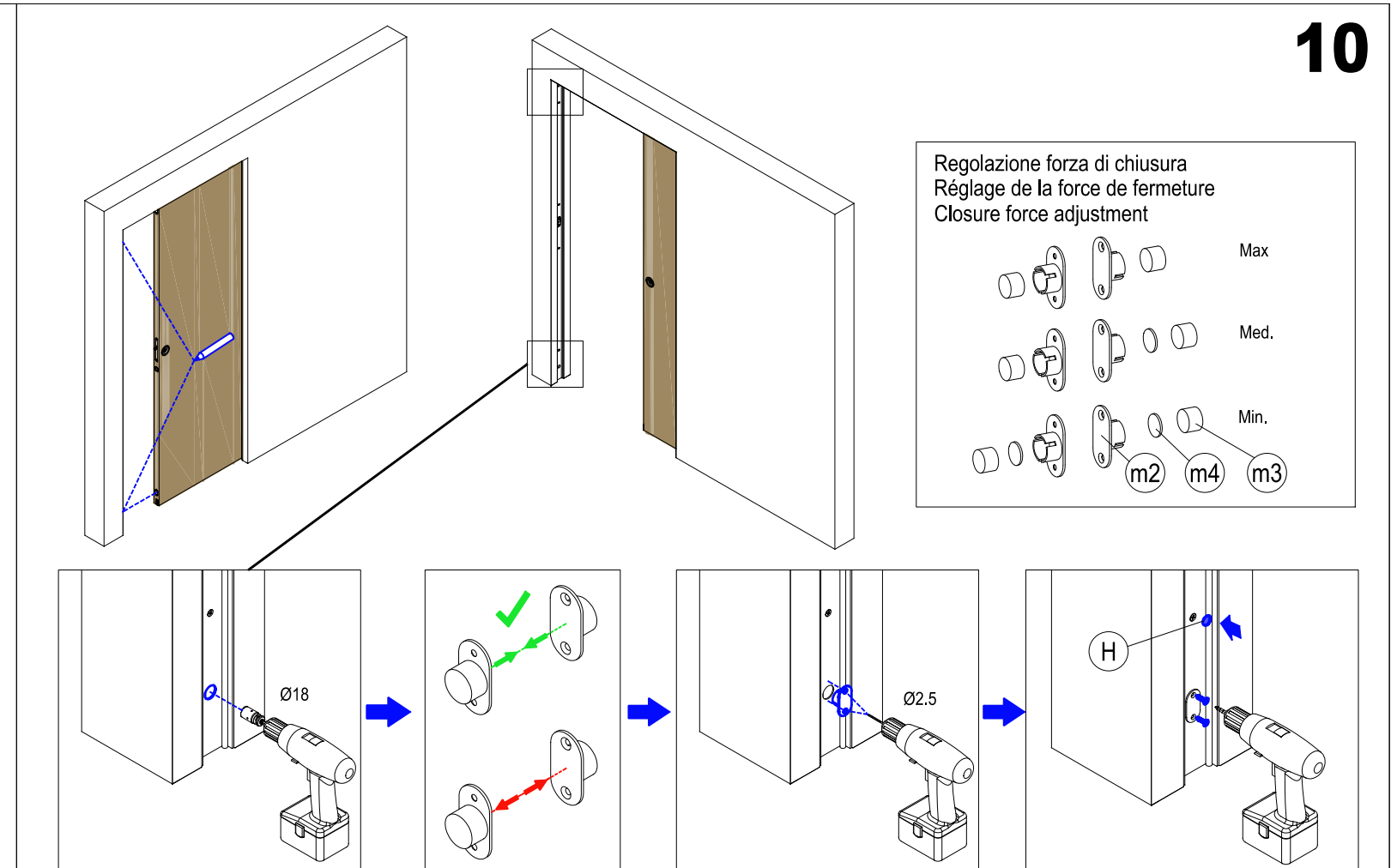
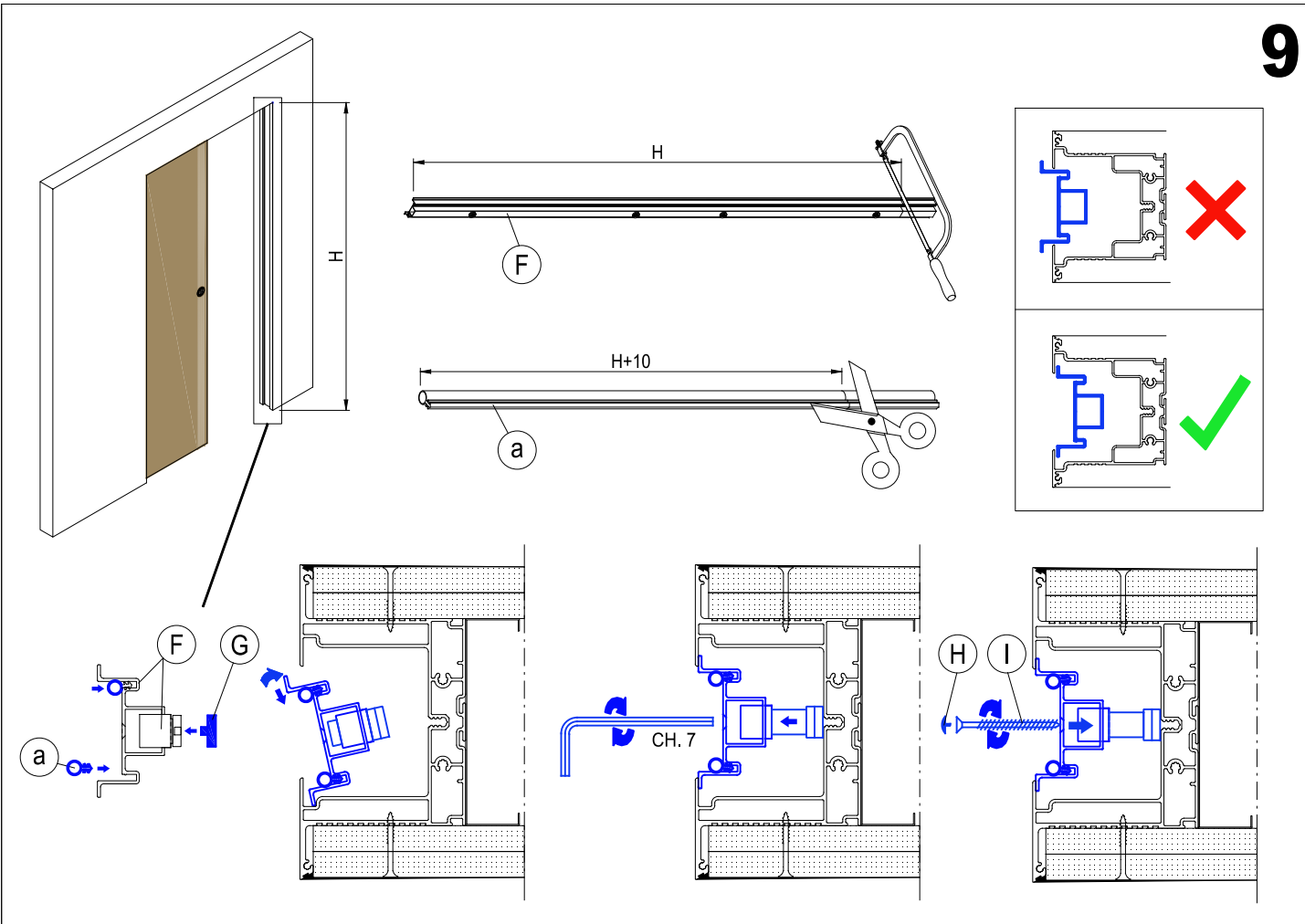
6



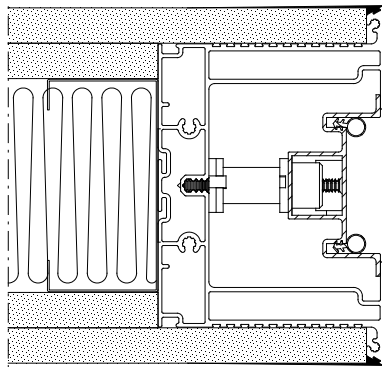
7



8



Luce commerciale 600-700-800-900-1000  
 Luce effettiva 590-690-790-890-990  
 Dimension de passage commerciale 600-700-800-900-1000  
 Dimension de passage effective 590-690-790-890-990  
 Commercial opening size 600-700-800-900-1000  
 Effective opening size 590-690-790-890-990

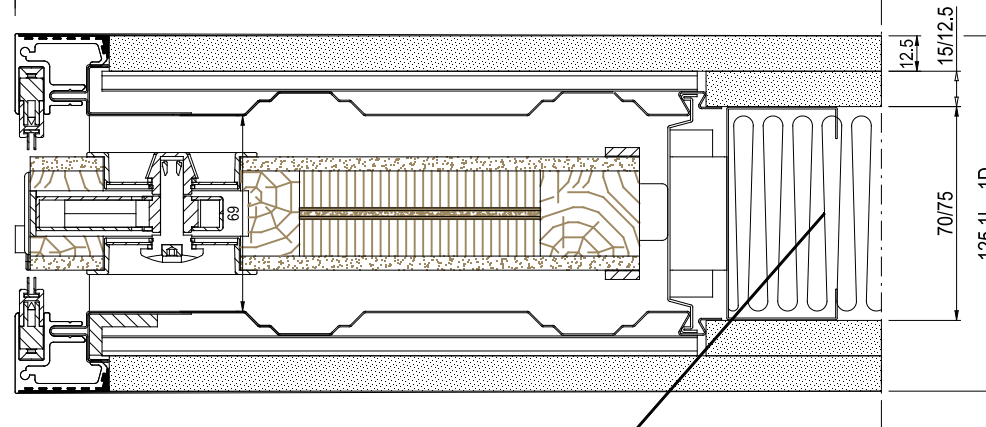


A  
 A

Sezione orizzontale 125 1L  
 porta aperta

Section horizontale 125 1 D  
 porte ouverte

Horizontal section one 125 Panel  
 open door



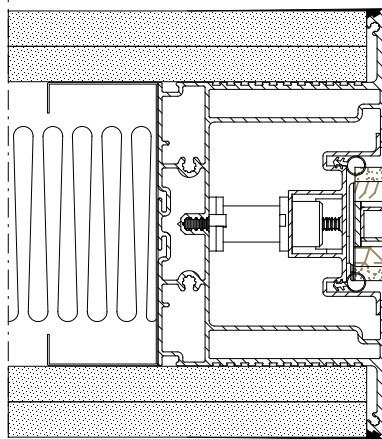
Costruzione flessibile standard. Parete in cartongesso a doppia lastra Sp.12,5 mm fissata a profili a U e C Sp.75 mm. Con Lana di vetro Sp. 70 densità 50 Kg/m<sup>3</sup>  
 Construction adaptable standard. Cloison en plaques de plâtre double dalle Ép. 12,5 et 15 mm fixée à des profils en U et C Ép. 70 mm. Avec laine de verre ép. 70 densité 50 kg/m<sup>3</sup>  
 Flexible standard construction. Plasterboard wall with double panel thickness 12,5 mm fixed to 75 mm thick U and C profiles. With 70 thickness fibreglass 50 kg/m<sup>3</sup> density

Sezione orizzontale 150 2L  
 porta chiusa

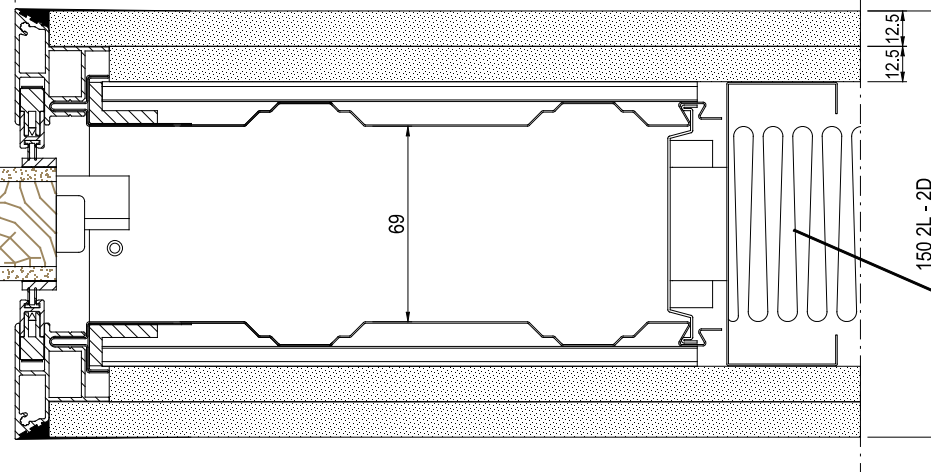
Section horizontale 150 2 D  
 porte fermée

Horizontal section two 150 Panels  
 closed door

Luce commerciale 600-700-800-900-1000  
 Luce effettiva 590-690-790-890-990  
 Dimension de passage commerciale 600-700-800-900-1000  
 Dimension de passage effective 590-690-790-890-990  
 Commercial opening size 600-700-800-900-1000  
 Effective opening size 590-690-790-890-990



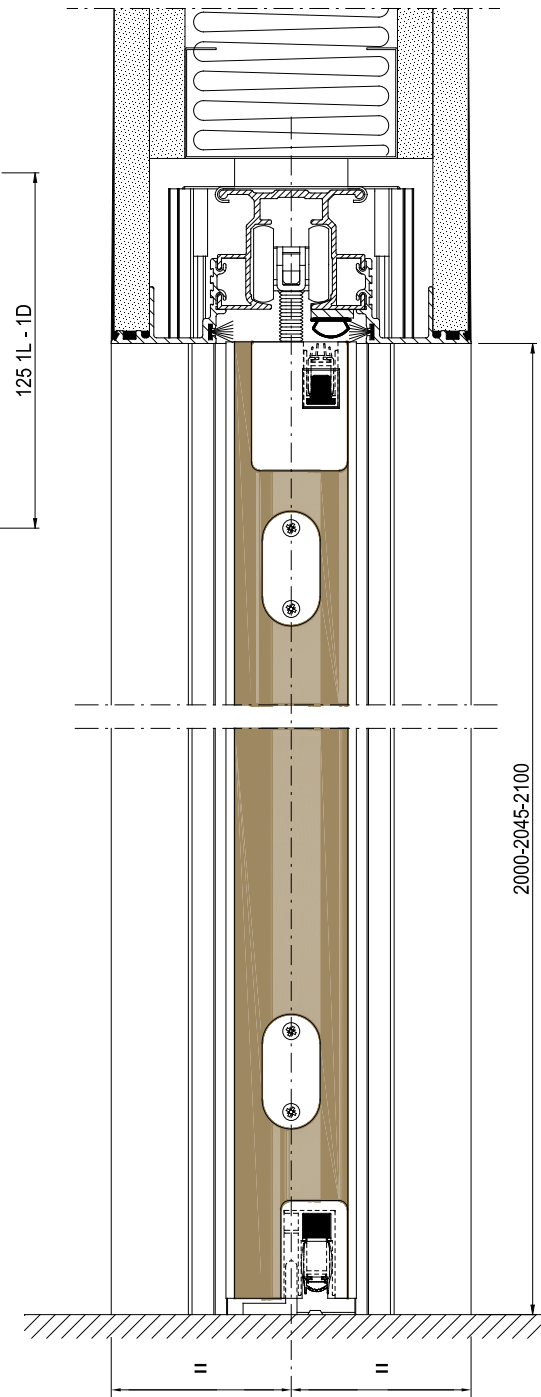
B  
 B



Sezione A-A (125 1L)

Section A-A (125 1 D)

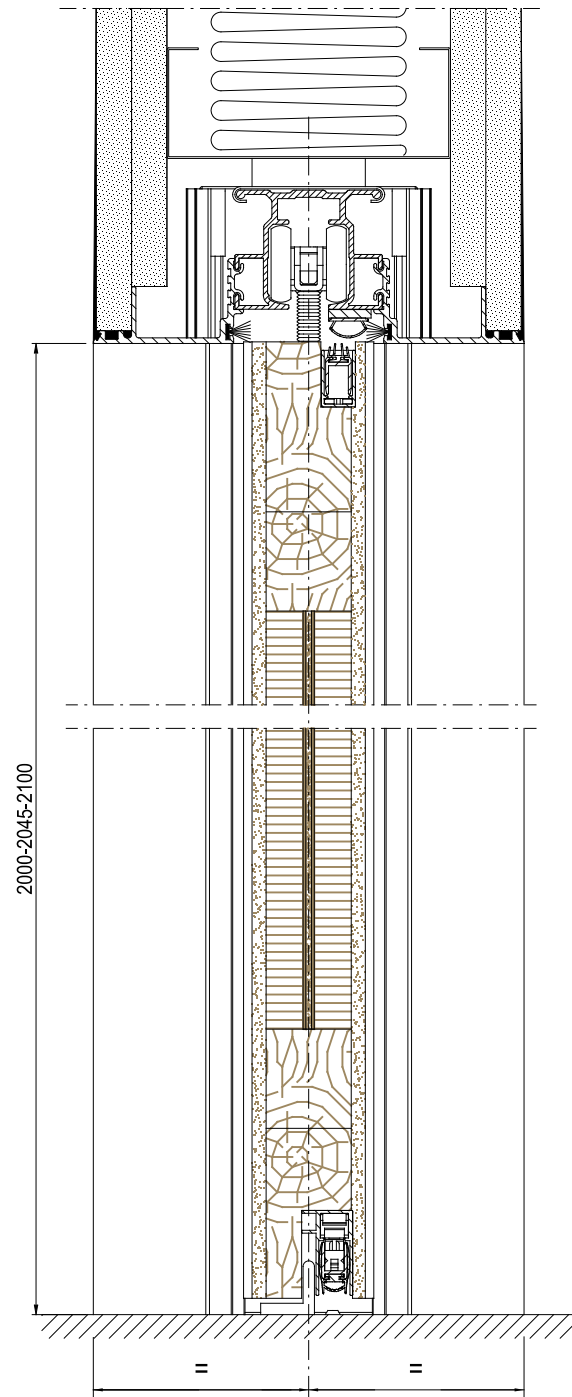
Section A-A (125 1L)



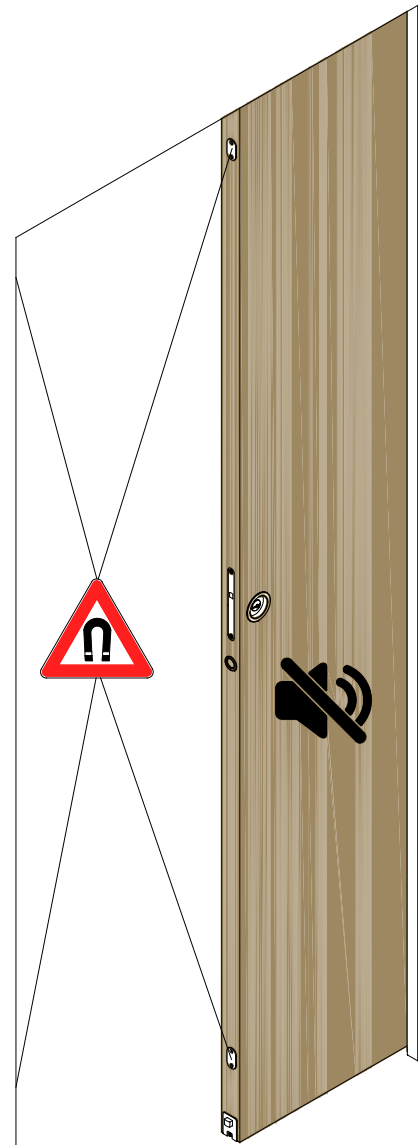
Sezione B-B (150 2L)

Section B-B (150 2 D)

Section B-B (150 2L)



Costruzione flessibile standard. Parete in cartongesso a doppia lastra Sp.12,5 mm fissata a profili a U e C Sp.100 mm. Con Lana di vetro Sp. 70 densità 50 Kg/m<sup>3</sup>  
 Construction adaptable standard. Cloison en plaques de plâtre double dalle Ép.12,5 mm fixée à des profils en U et C Ép.100 mm. Avec laine de verre ép. 70 densité 50 kg/m<sup>3</sup>  
 Flexible standard construction. Plasterboard wall with double panel thickness 12,5 mm fixed to 100 mm thick U and C profiles. With 70 thickness fibreglass 50 kg/m<sup>3</sup> density



Articolo venduto separatamente  
Artículo vendido por separado  
Artikel separat erhältlich

ESSENTIAL  
125 CARTONGESSO 1 LASTRA  
150 CARTONGESSO 2 LASTRE

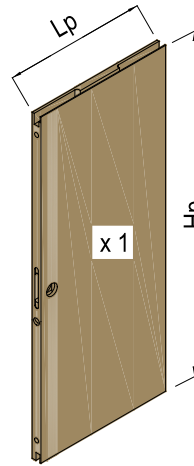
ESSENTIAL  
125 CARTÓN-YESO 1 PLACA  
150 CARTÓN-YESO 2 PLACAS

ESSENTIAL  
125 TROCKENBAUWAND 1 PLATTE  
150 TROCKENBAUWAND 2 PLATTEN

ANTA ACUSTICA  
HOJA ACÚSTICA  
AKUSTISCHER TÜRFLÜGEL

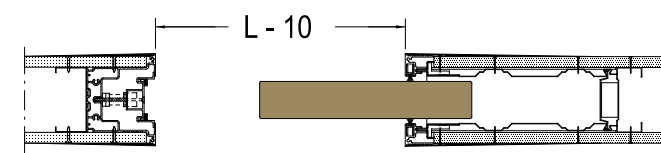
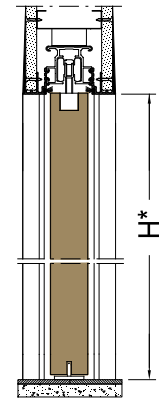
Articolo venduto separatamente  
Artículo vendido por separado  
Artikel separat erhältlich

LUCE COMMERCIALE	LUCE EFFETTIVA	ANTA
HUECO COMERCIAL	HUECO REAL	HOJA
LICHTE GESAMT	EFFEKTIVE LICHTE	TÜRFLÜGEL
L	L - 10	Lp = L + 15
600	590	615
700	690	715
800	790	815
900	890	915
1000	990	1015



\* VERIFICARE PRIMA DI ORDINARE LA PORTA  
\* VERIFICAR ANTES DE ENCARGAR LA PUERTA  
\* VOR BESTELLUNG DER TÜR ÜBERPRÜFEN

LUCE HUECO LICHTE	ANTA HOJA TÜRFLÜGEL
H	Hp = H - 6
2000*	1994
2045*	2039
2100*	2094



KIT FERRAMENTA - KIT HERRAJES - BESCHLAG-SET

Articolo venduto separatamente  
Artículo vendido por separado  
Artikel separat erhältlich

**a** 2 x

**b** 1 x

**c** 1 x

**d** 2 x

**e** 1 x

**f** 2 x

**g** 2 x

**h** 1 x

**i** 1 x

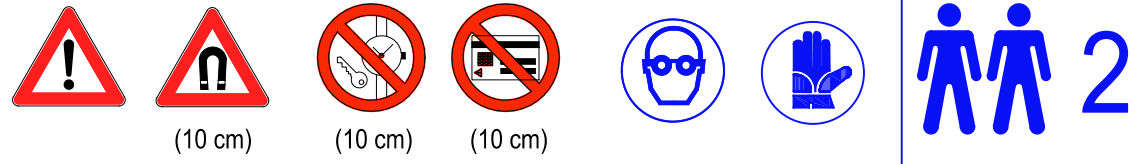
**l** 1 x

**m** 2 x

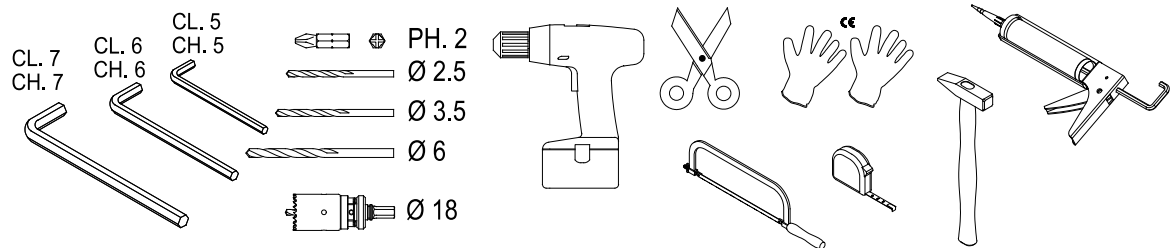
**n** 1 x

**o** 1 x

**p** 1 x



Nota: Test eseguito con telaio posato a regola d'arte, foro di passaggio 1000x2100 con kit chiudiscigno con serratura  
Nota: ensayo realizado con marco perfectamente instalado, hueco de paso 1000x2100 con kit Chiu discigno con cerradura  
Hinweis: Test mit professionell montiertem Rahmen, Durchgangsbohrung 1000x2100 mit Set Chiu discigno mit Schloss



The information given in this document is for descriptive purposes only. SCRIGNO S.p.A. will not be held responsible for any inaccuracies caused by printing errors, transcription errors or for any other reason, and reserves the right to make modifications, without giving prior notice, for the improvement of its products. The reproduction, including the partial reproduction, of this document is severely prohibited within the terms of the Law.

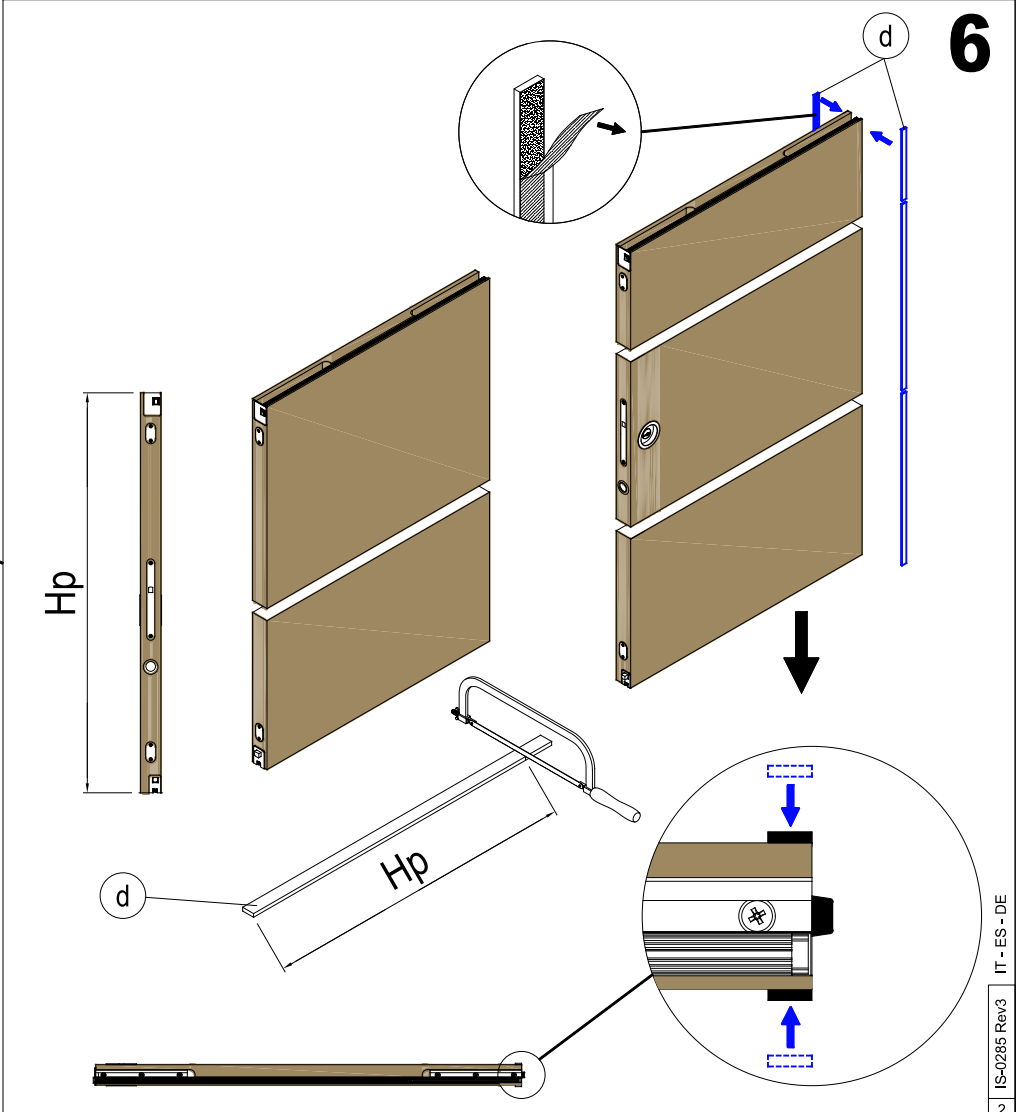
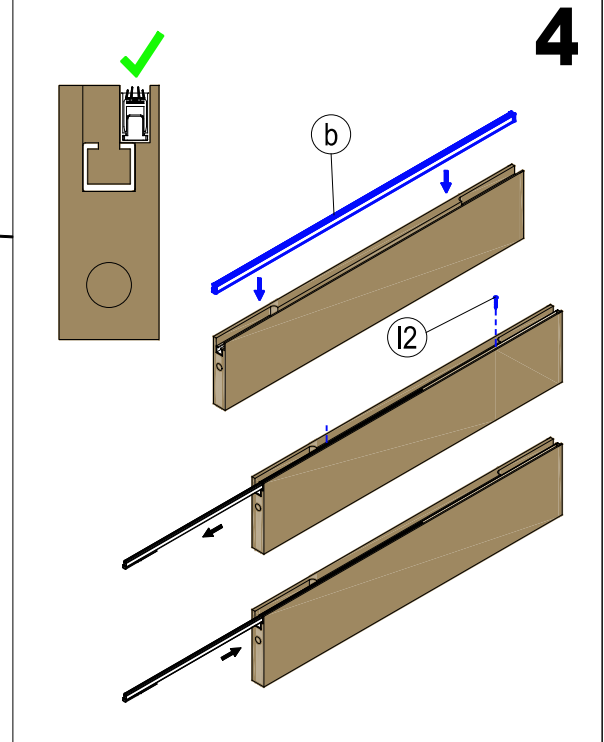
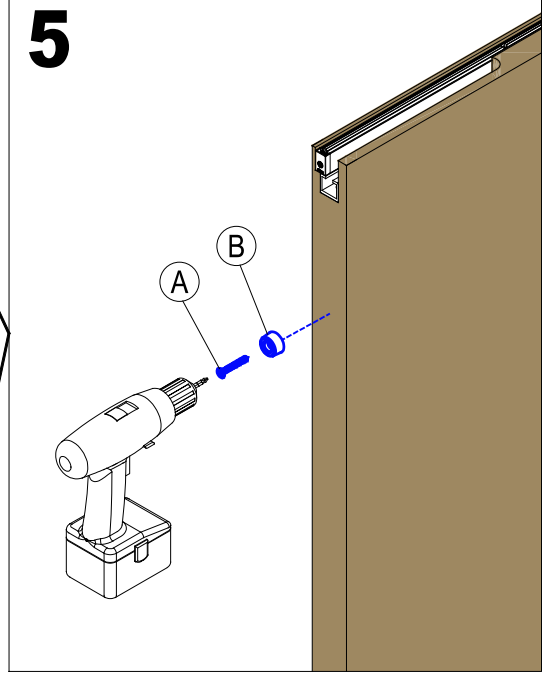
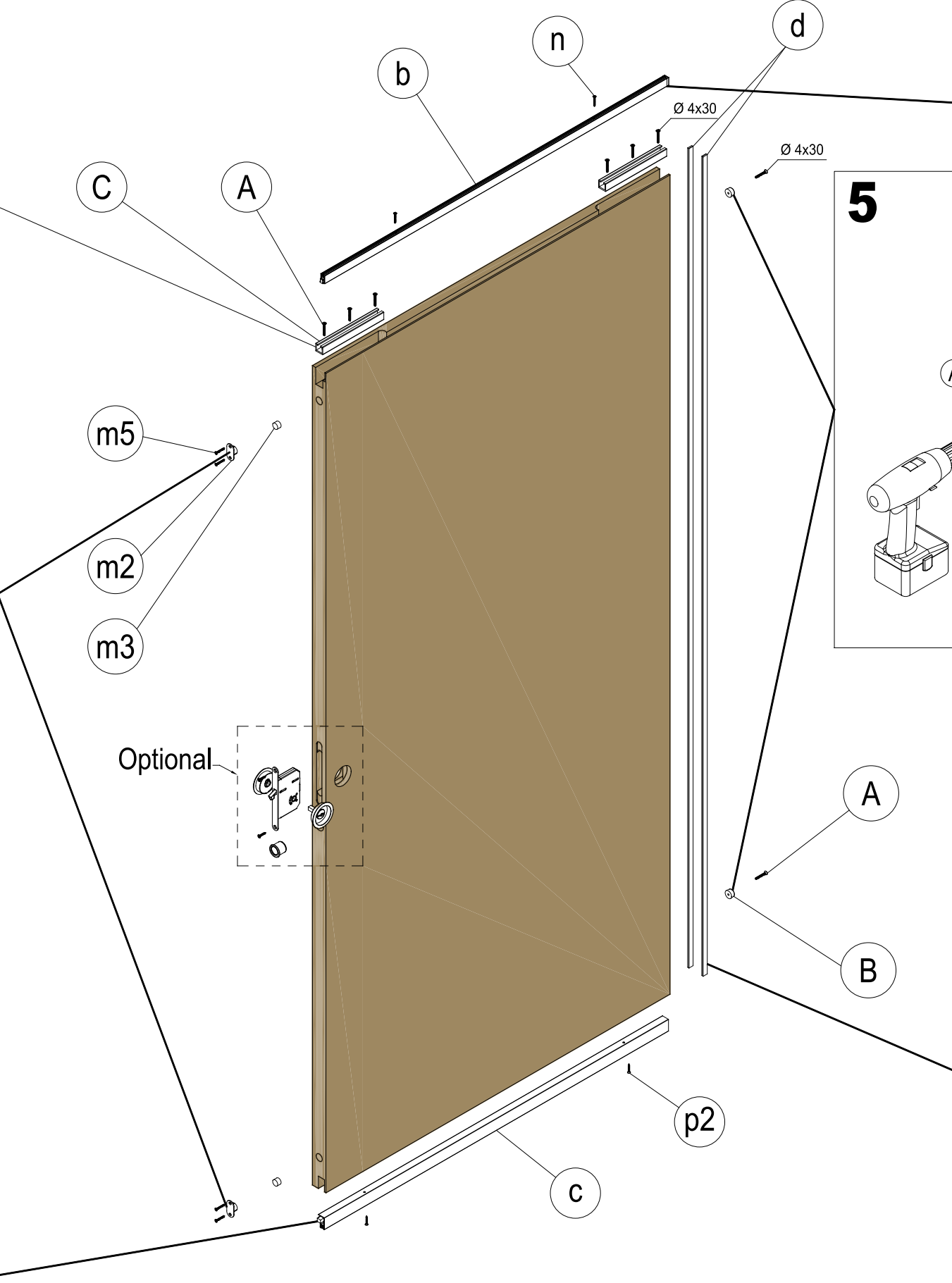
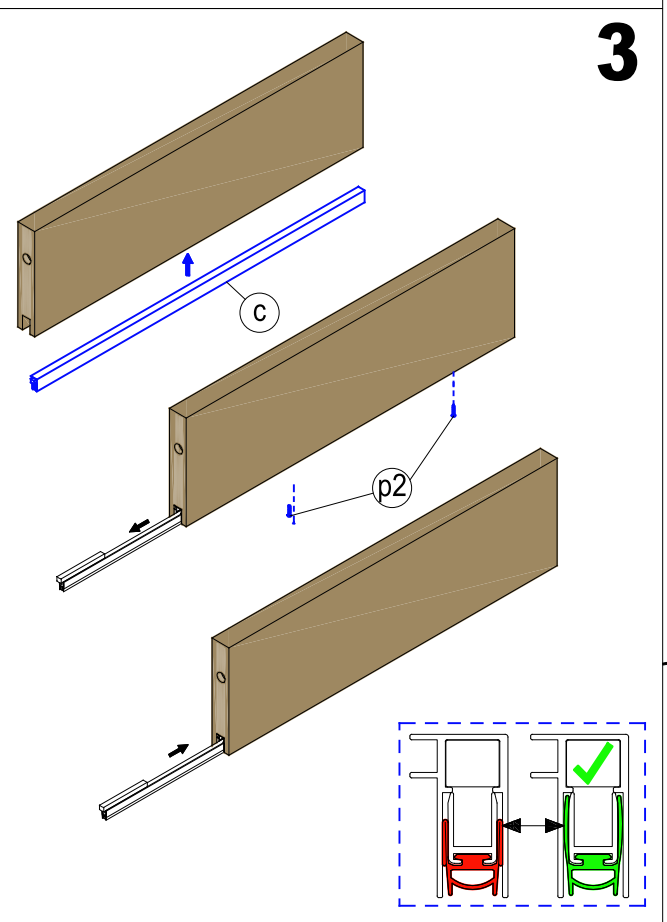
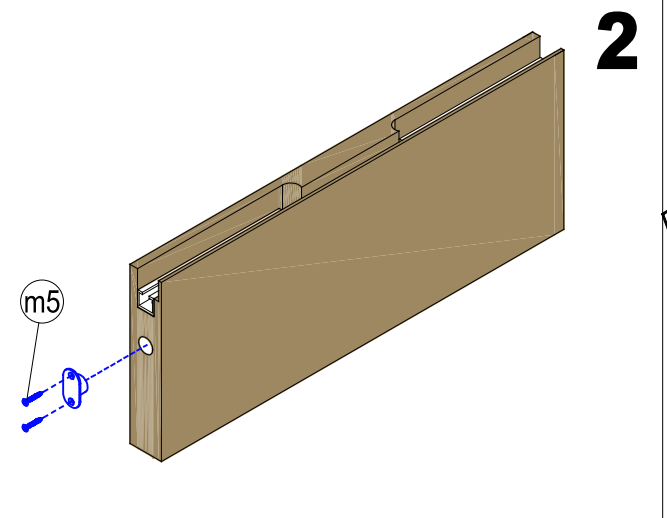
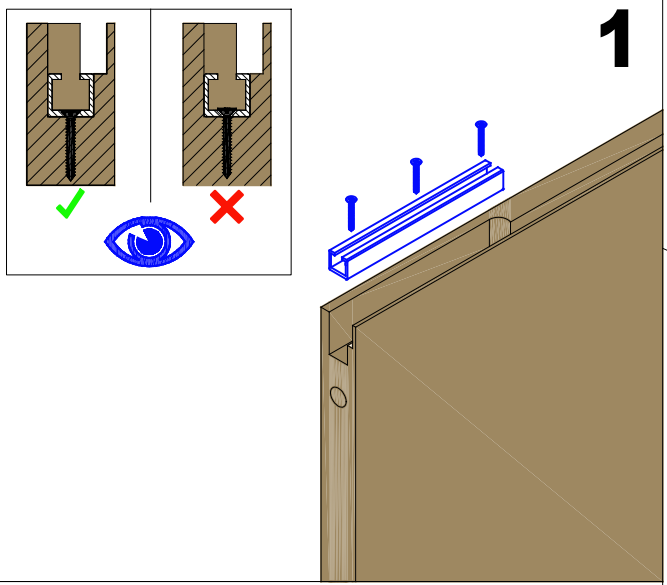
Bei den veröffentlichten Daten handelt es sich um Richtwerte. Die Scrigno S.p.A. lehnt jegliche Haftung für auf Druckfehler oder andere Ursachen zurückzuführende Ungenauigkeiten ab, und behält sich das Recht vor, jederzeit ohne Vorankündigung Verbesserungen am Produkt vorzunehmen. Der Nachdruck ist auch auszugsweise gesetzlich untersagt.

Los datos publicados son indicativos. La sociedad SCRIGNO S.p.A. declina toda responsabilidad por los posibles errores contenidos, debido a errores de imprenta, de transcripción o cualquier otro motivo y se reserva el derecho de mejorar los productos sin previo aviso. La reproducción total o parcial esta prohibida por la ley.

Ces informations sont remises à titre indicatif. SCRIGNO S.p.A. décline toute responsabilité en cas d'erreur d'impression, de traduction, ou pour tout autre motif. Elle se réserve le droit d'apporter toute modification pour le montage et l'amélioration du produit sans préavis. Toute reproduction même partielle de ce document est formellement interdite.

I dati pubblicati sono indicativi. SCRIGNO S.p.A. declina ogni responsabilità per le possibili inesattezze contenute, dovute ad errori di stampa, di trascrizione o per qualsiasi altro motivo e si riserva il diritto di apportare modifiche atte a migliorare i prodotti senza preavviso. La riproduzione anche parziale è severamente vietata a norme di legge.

PREPARAZIONE ANTA - PREPARACIÓN DE LA HOJA - VORBEREITUNG TÜRFLÜGEL



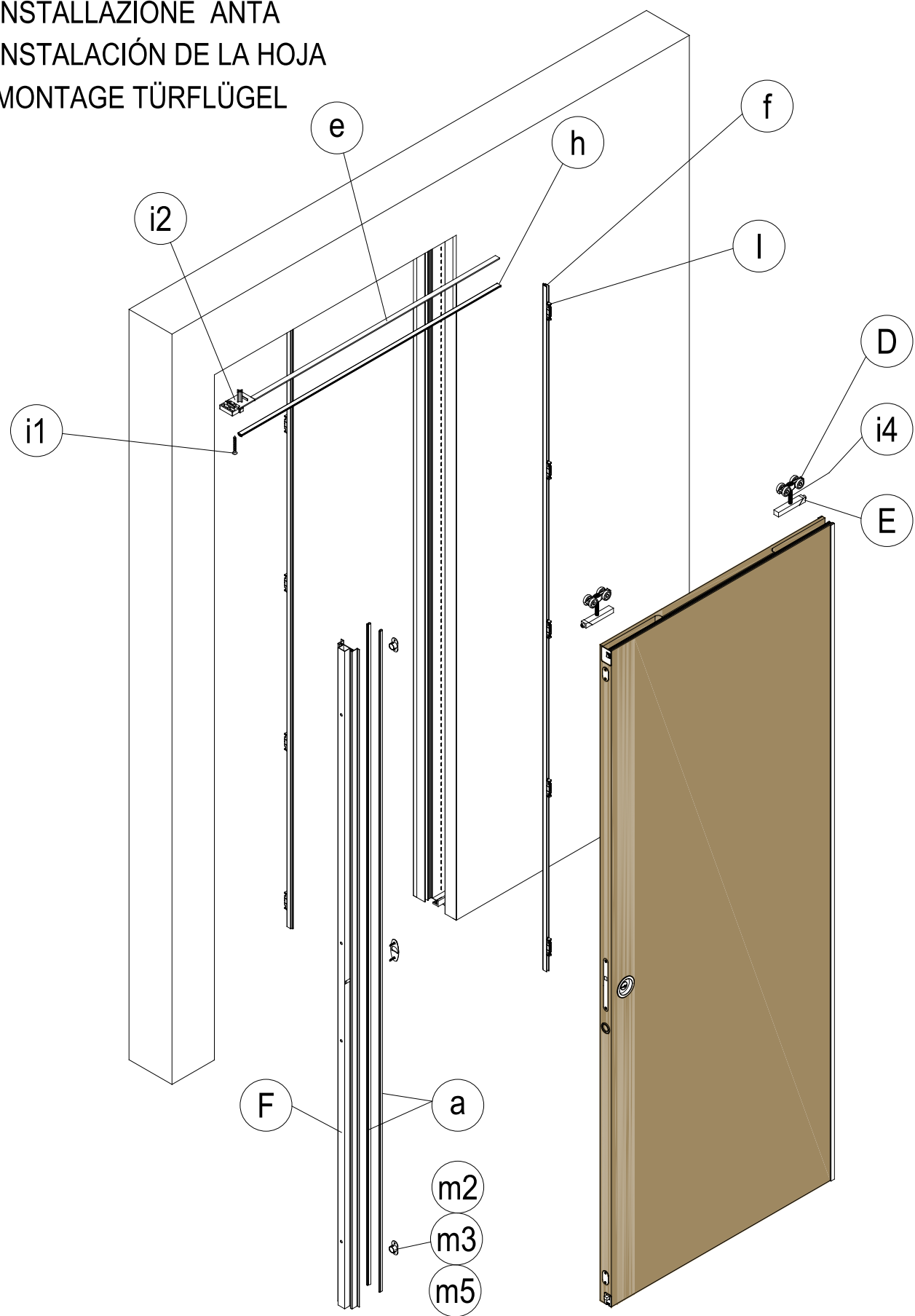
PRELEVARE I SEGUENTI ACCESSORI DALLA DOTAZIONE DEL CONTROLTELAIO  
 UTILIZAR LOS SIGUIENTES ACCESORIOS DE ENTRE LOS INCLUIDOS CON EL PREMARCO  
 FOLGENDES ZUBEHÖR AUS DEM LIEFERUMFANG DES EINBAUELEMENTS ENTNEHMEN

Ø 4x30  
 A x 8

B x 2

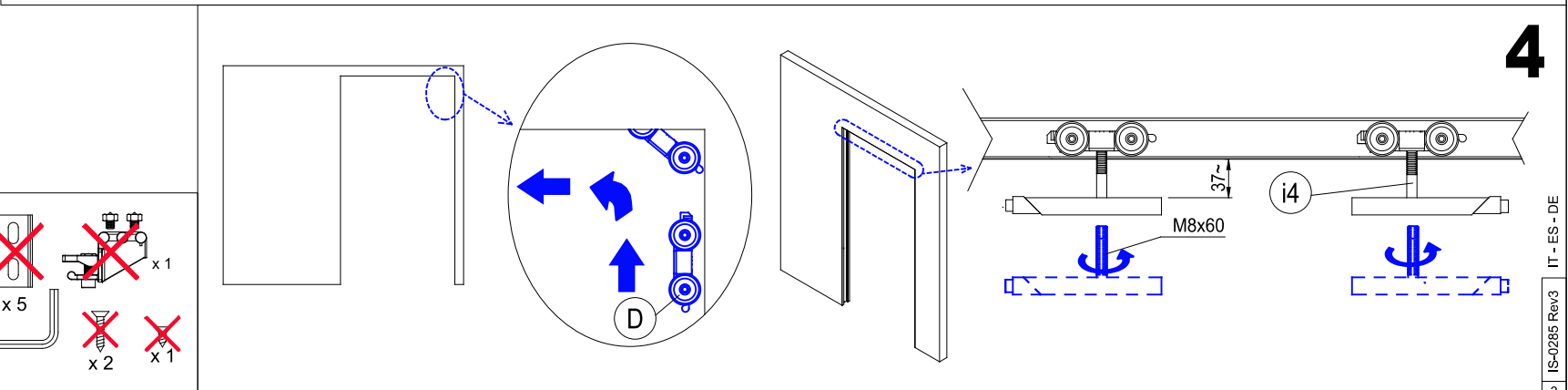
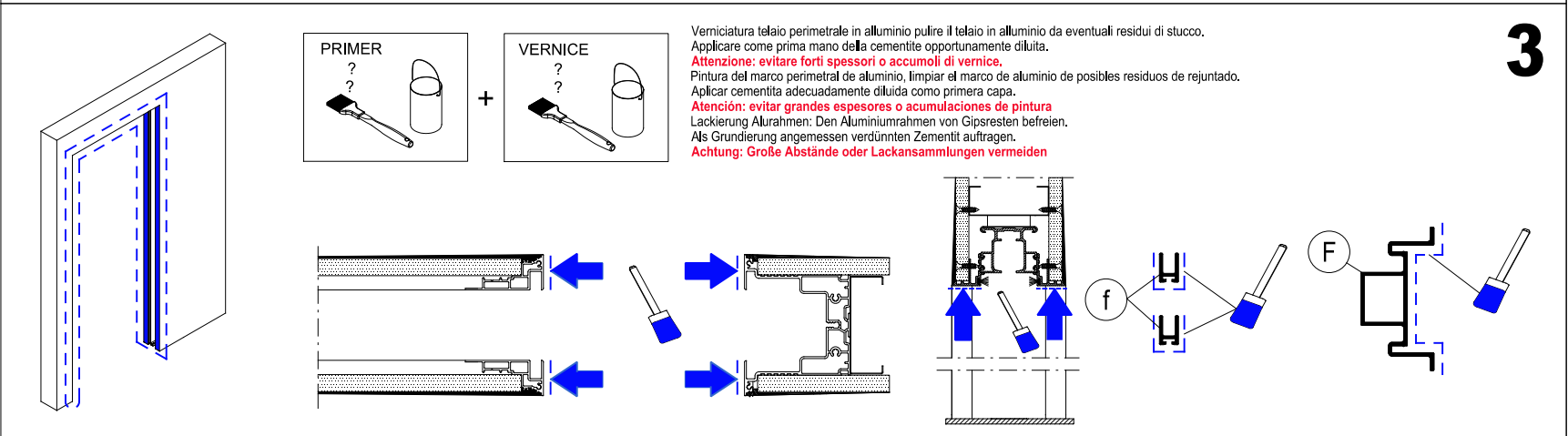
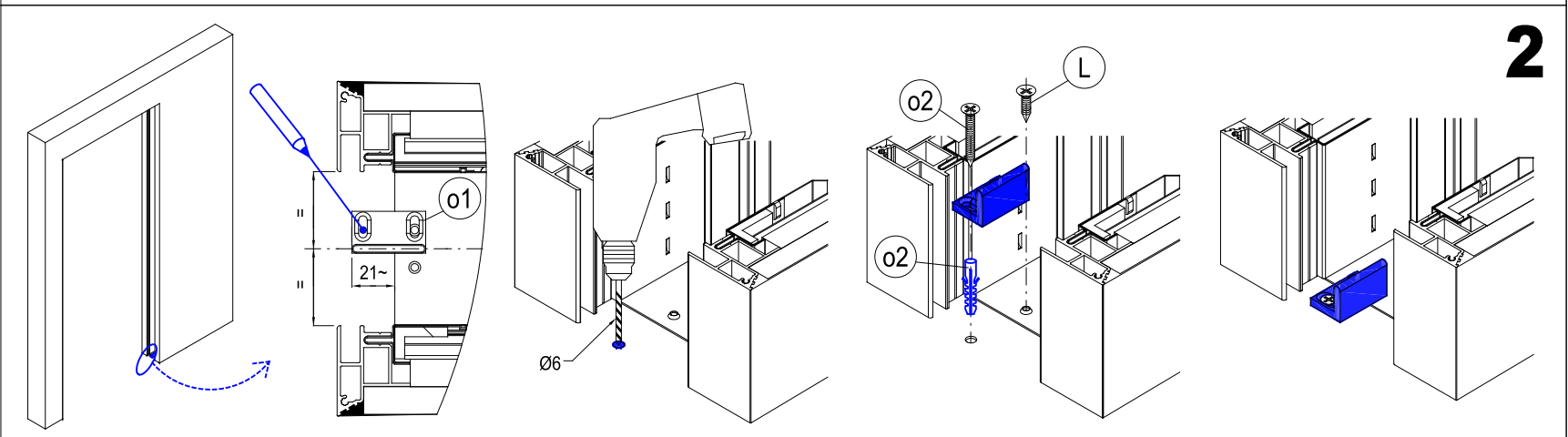
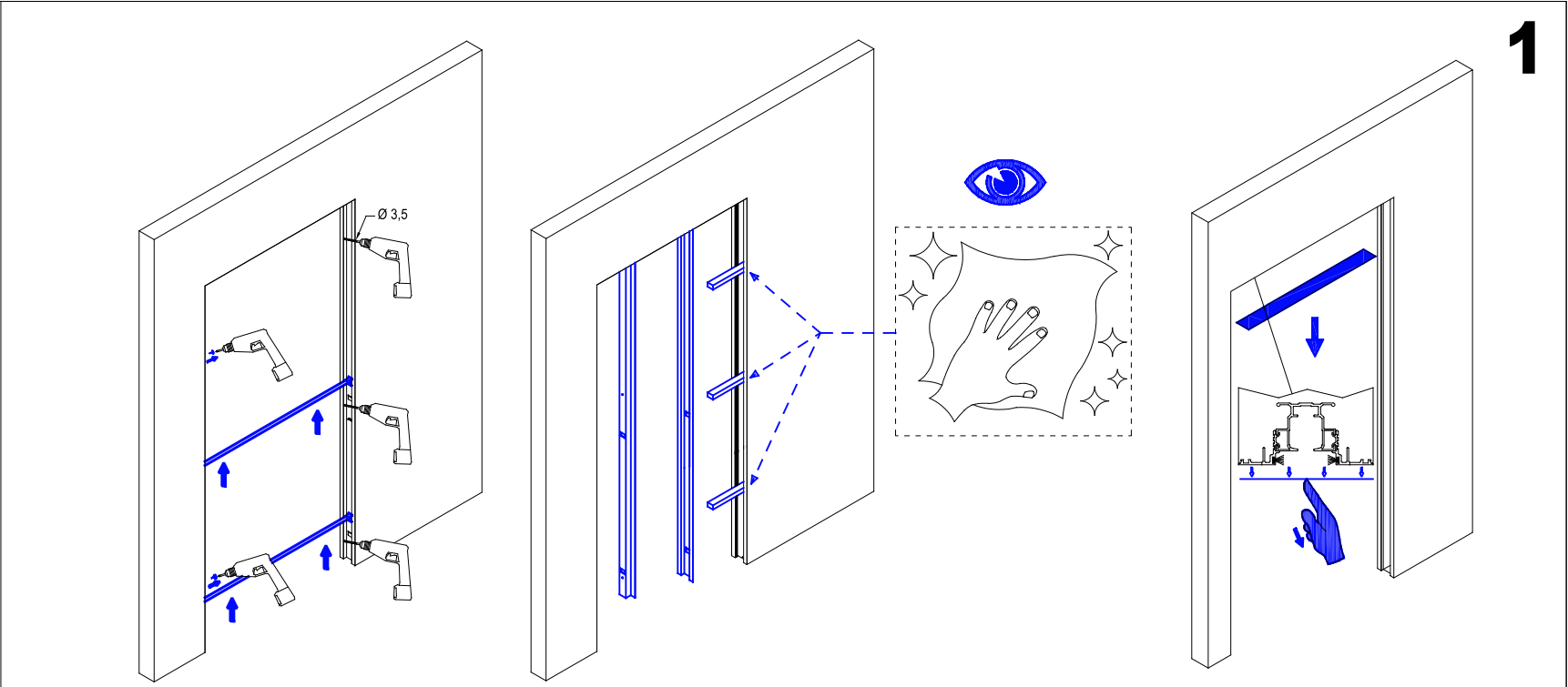
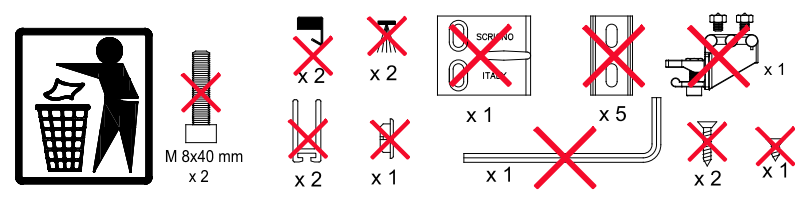
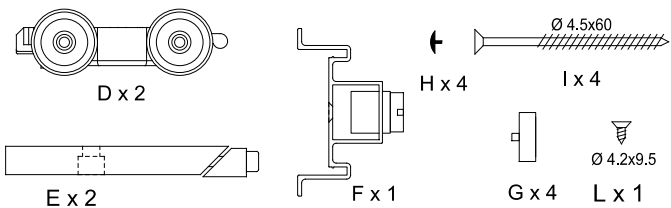
C x 2

INSTALLAZIONE ANTA  
 INSTALACIÓN DE LA HOJA  
 MONTAGE TÜRFLÜGEL



ACCESSORI DA PRELEVARE DALLA DOTAZIONE DEL CONTROTELAIO  
 ACCESORIOS A UTILIZAR DE ENTRE LOS INCLUIDOS CON EL PREMARCO  
 AUS DEM LIEFERUMFANG DES EINBAUELEMENTS ZU ENTNEHMENDES ZUBEHÖR

ACCESSORI NON NECESSARI  
 ACCESORIOS NO NECESARIOS  
 NICHT ERFORDERLICHES ZUBEHÖR

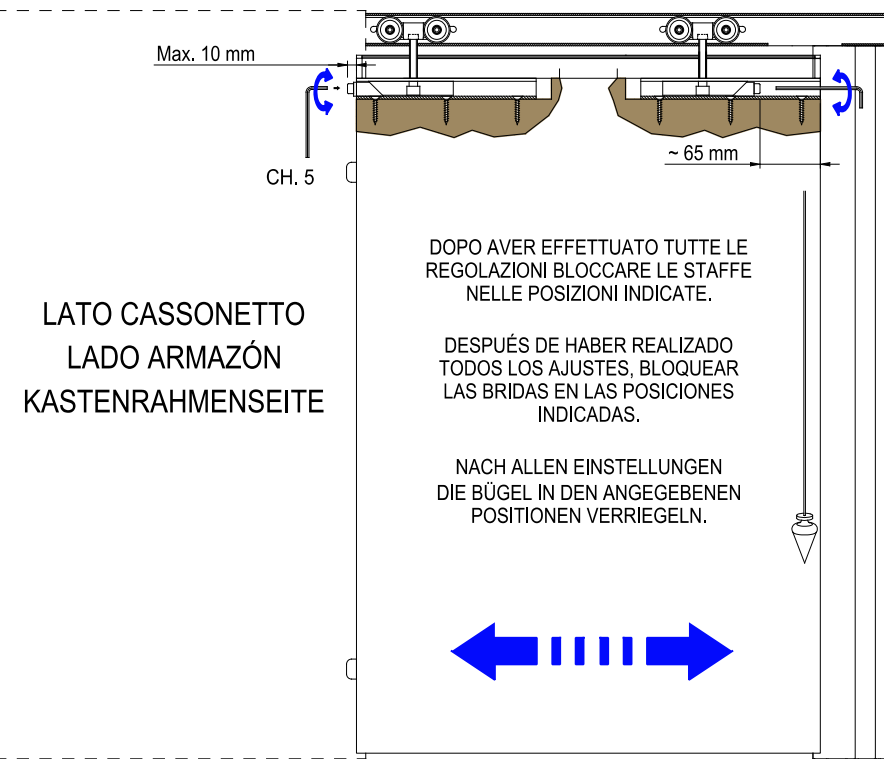
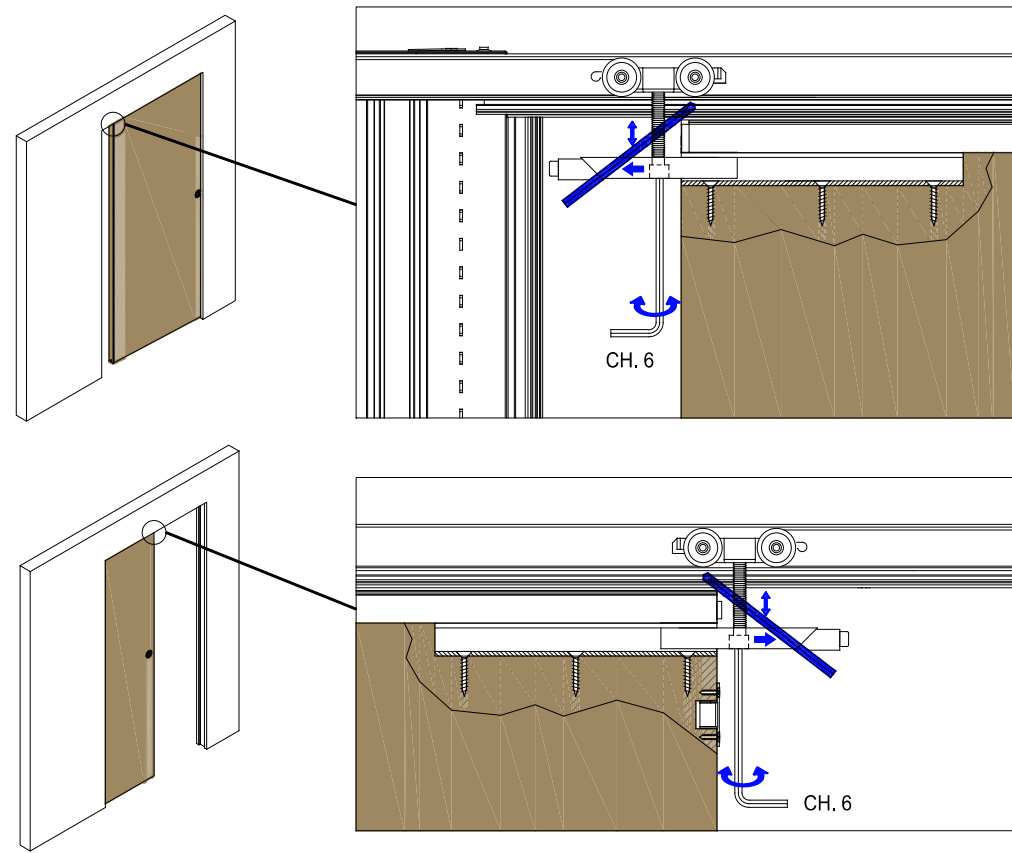


1

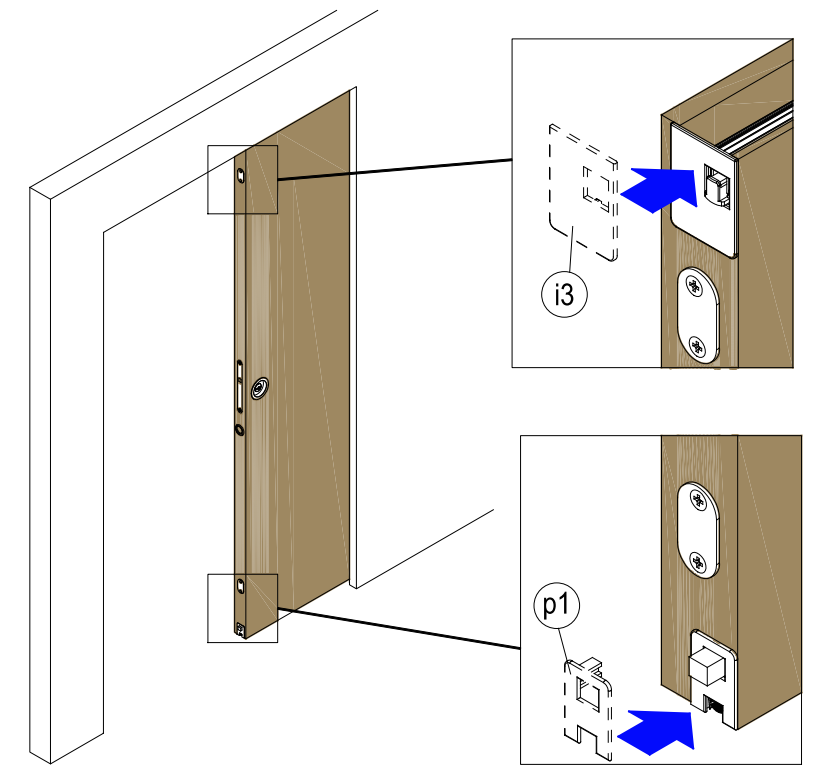
2

3

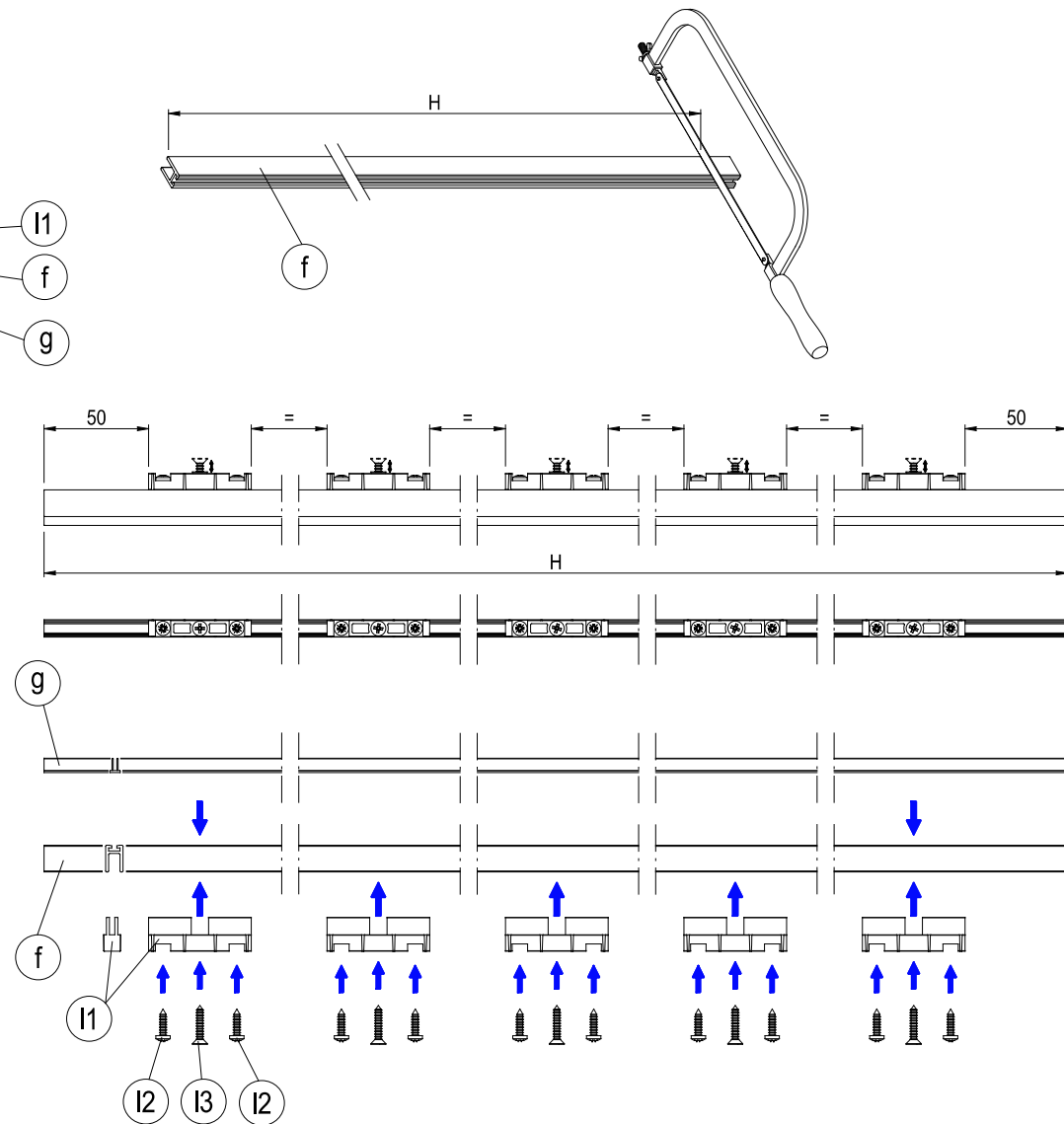
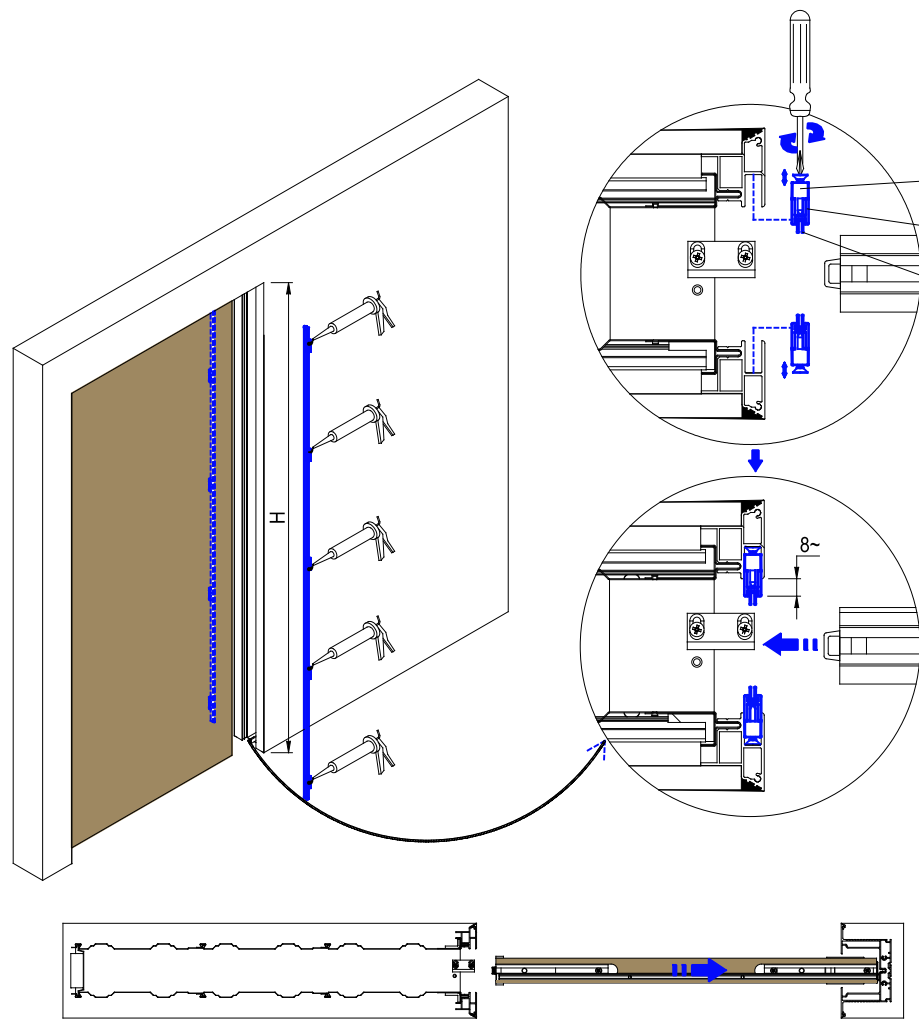
4



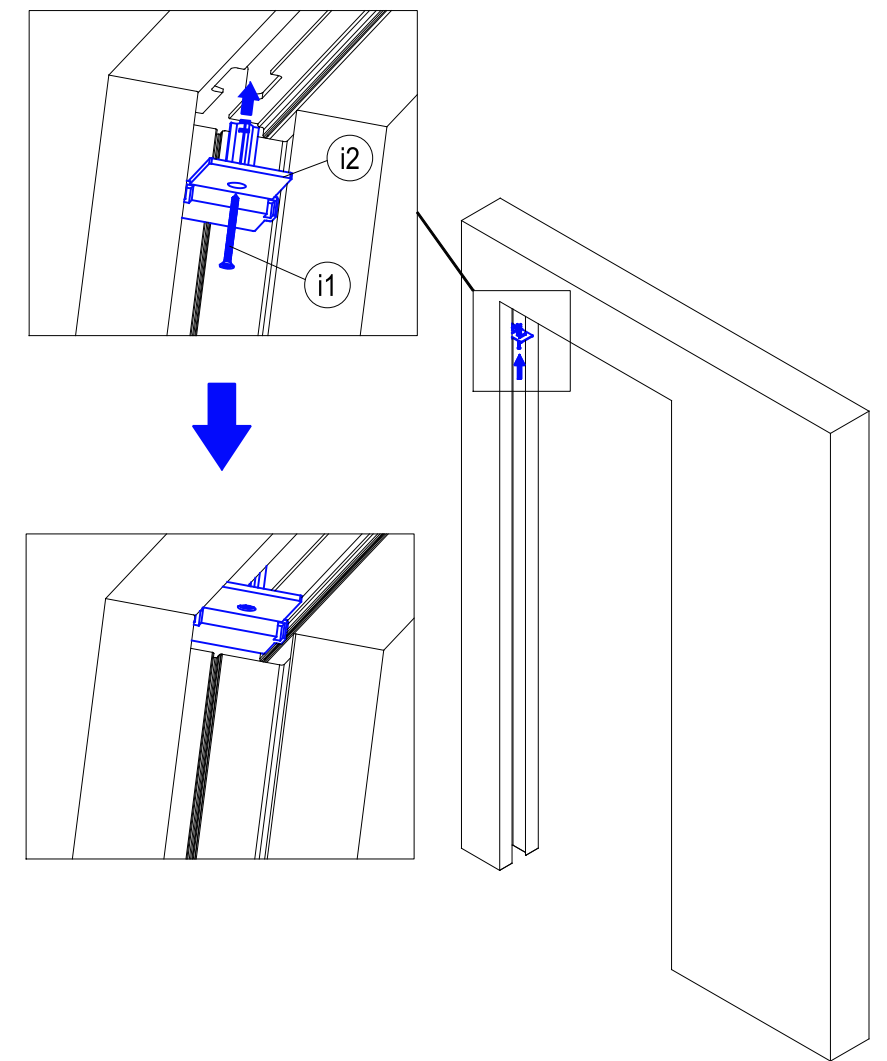
5



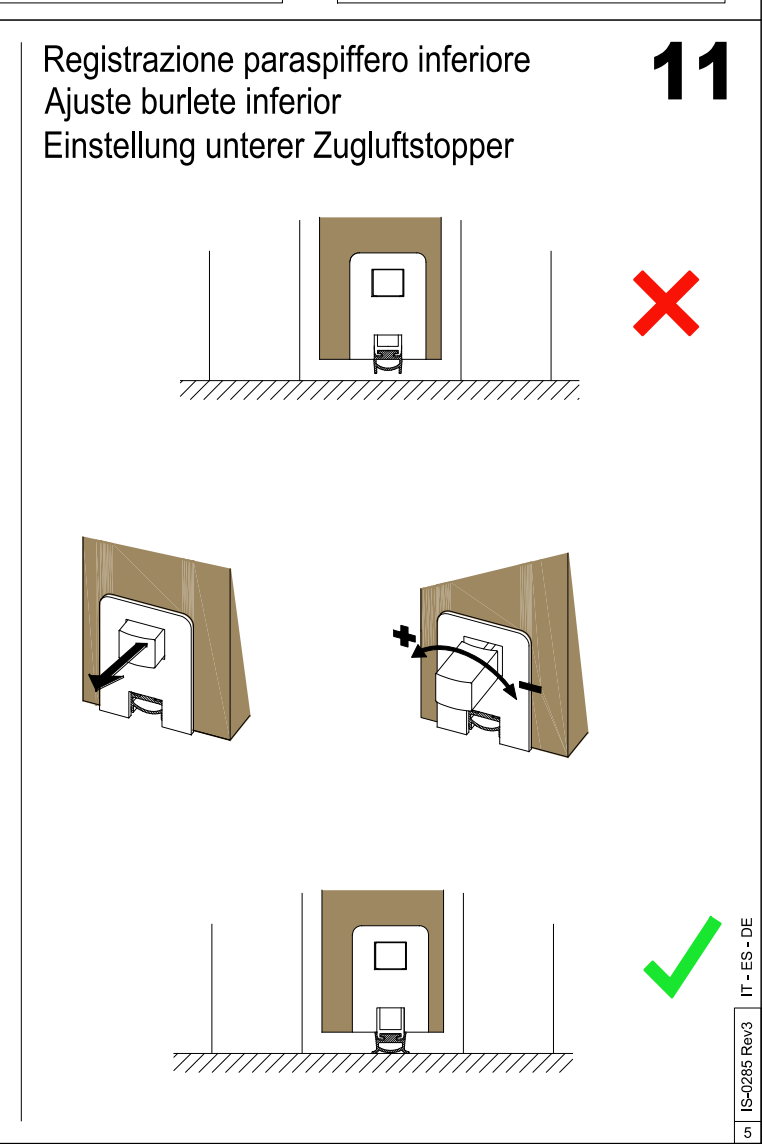
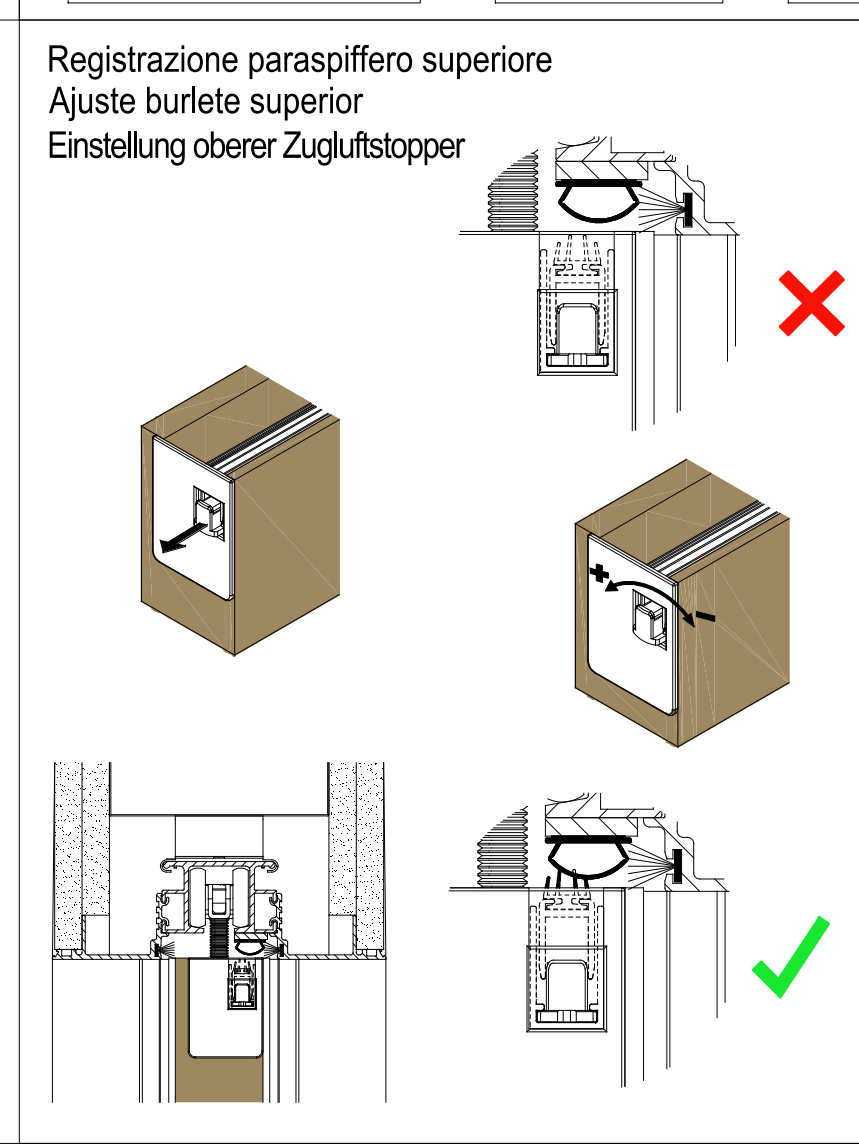
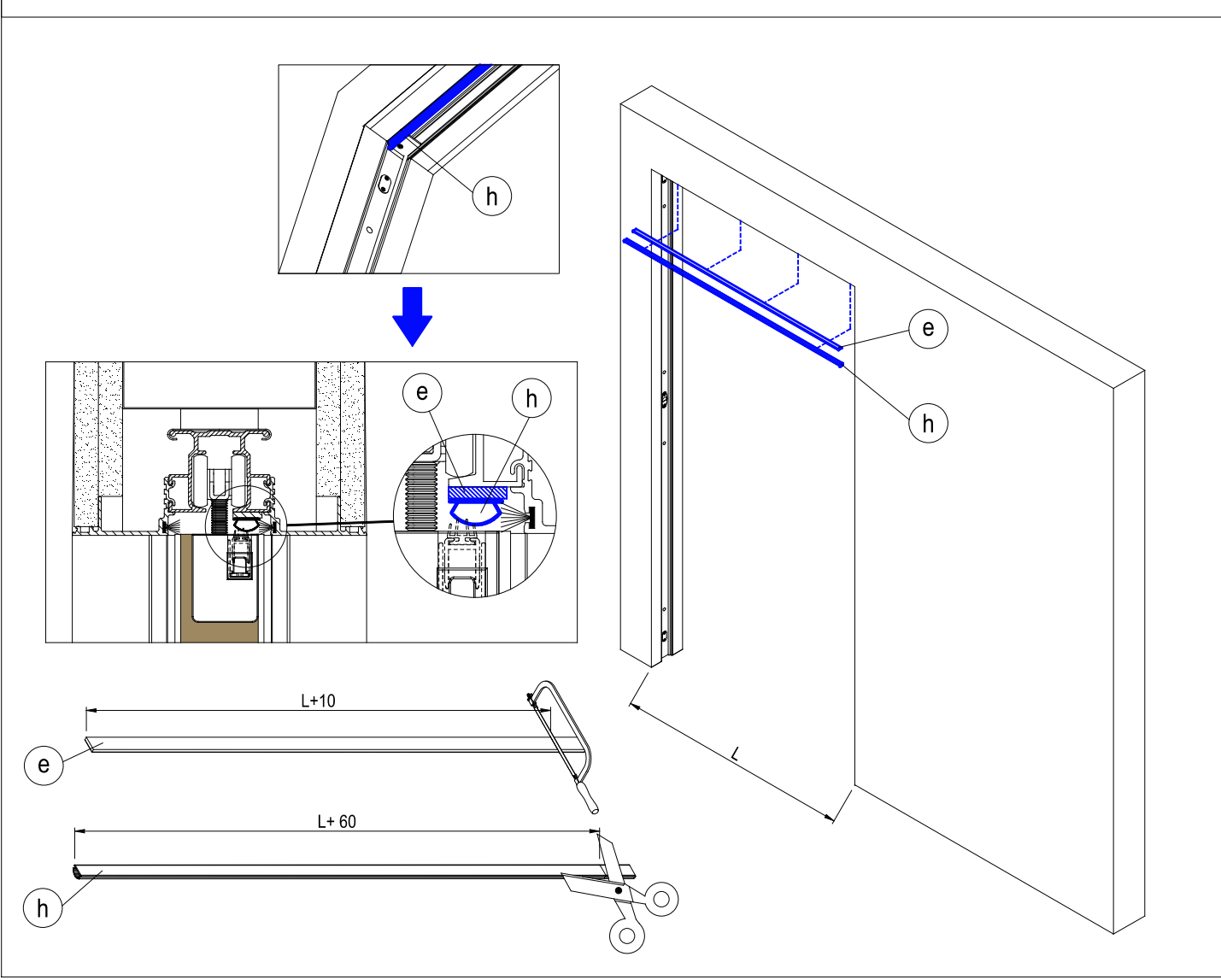
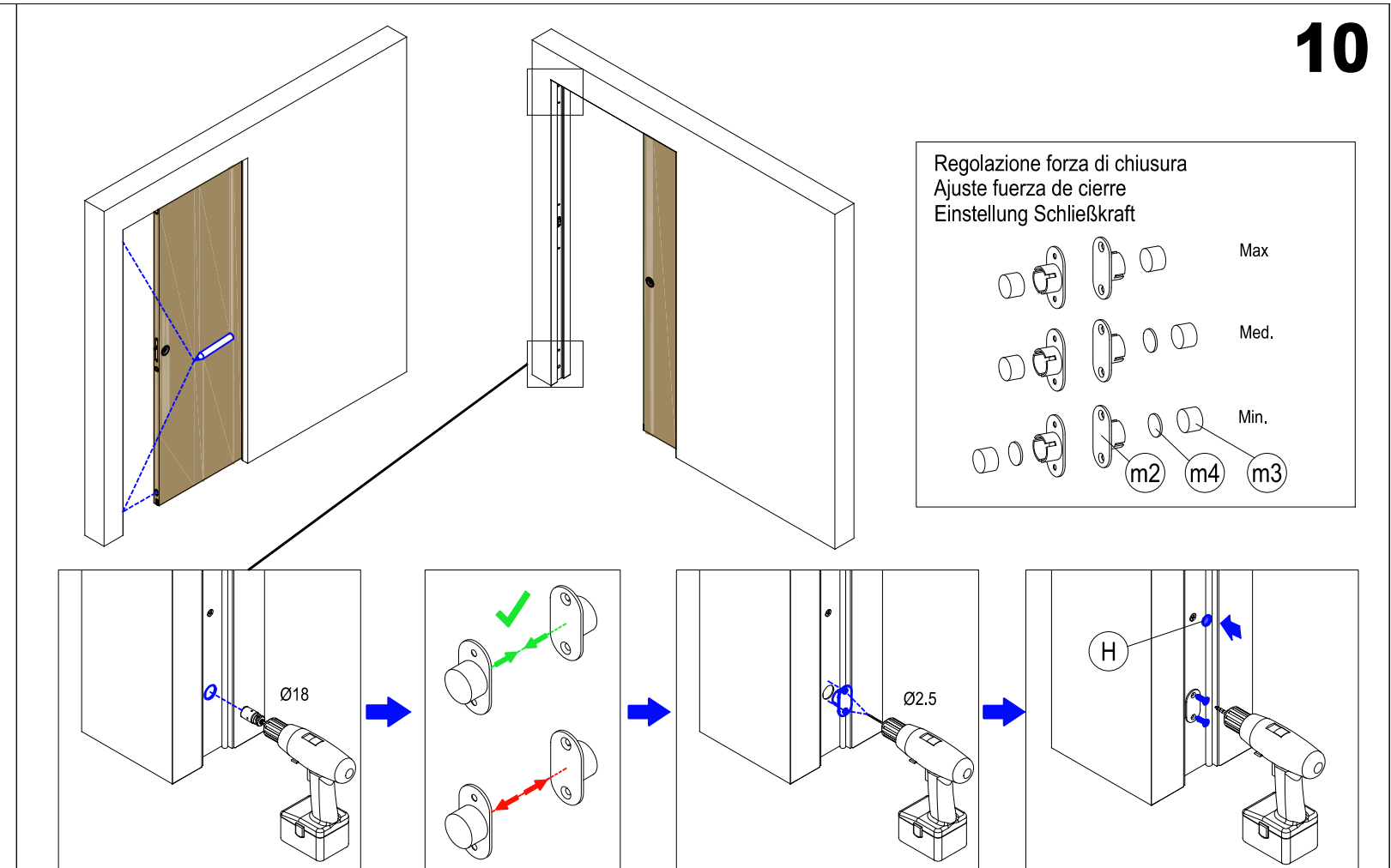
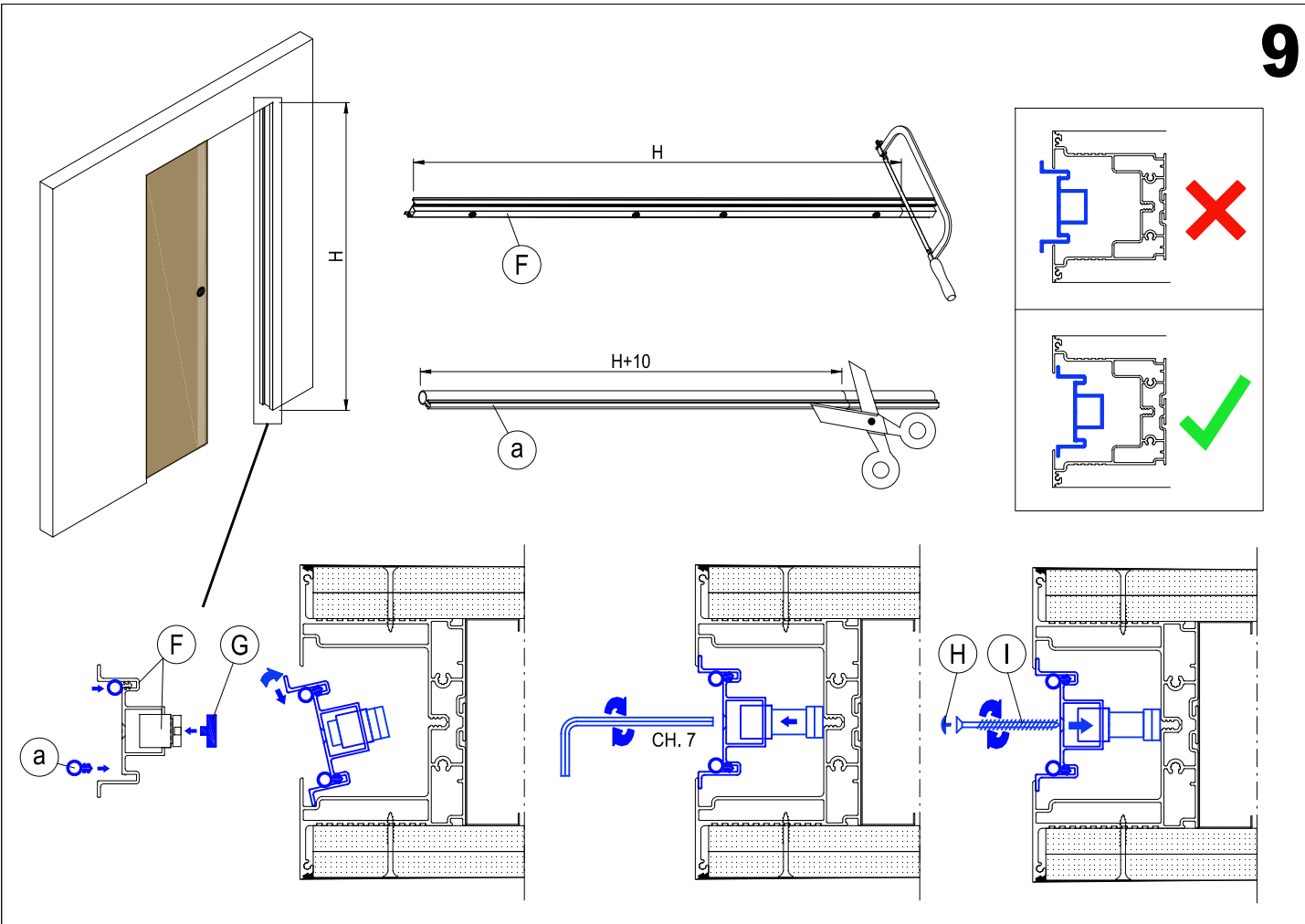
6



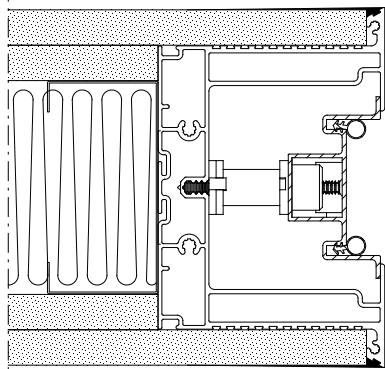
7



8



Luce commerciale 600-700-800-900-1000  
 Luce effettiva 590-690-790-890-990  
 Hueco comercial 600-700-800-900-1000  
 Hueco real 590-690-790-890-990  
 Lichte gesamt 600-700-800-900-1000  
 Effektive Lichte 590-690-790-890-990

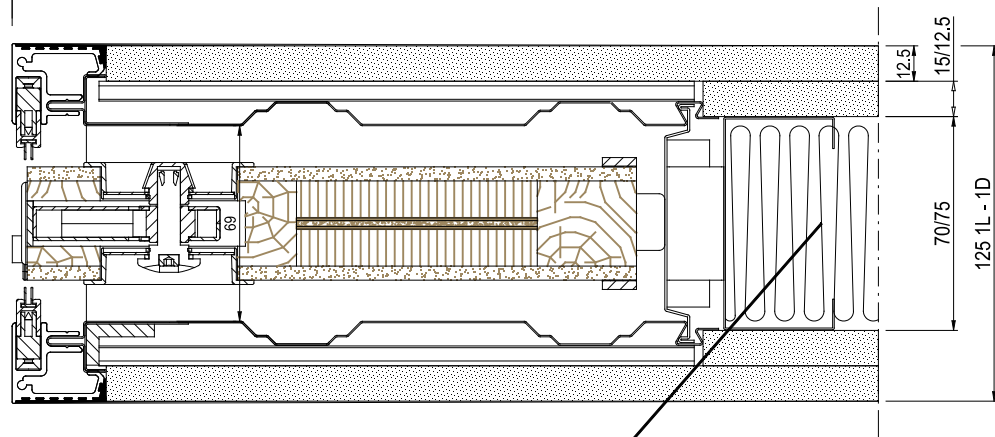


A  
 A

Sezione orizzontale 125 1L  
 porta aperta

Sección horizontal 125 1L  
 puerta abierta

Horizontaler Querschnitt 125 1L  
 Tür geöffnet

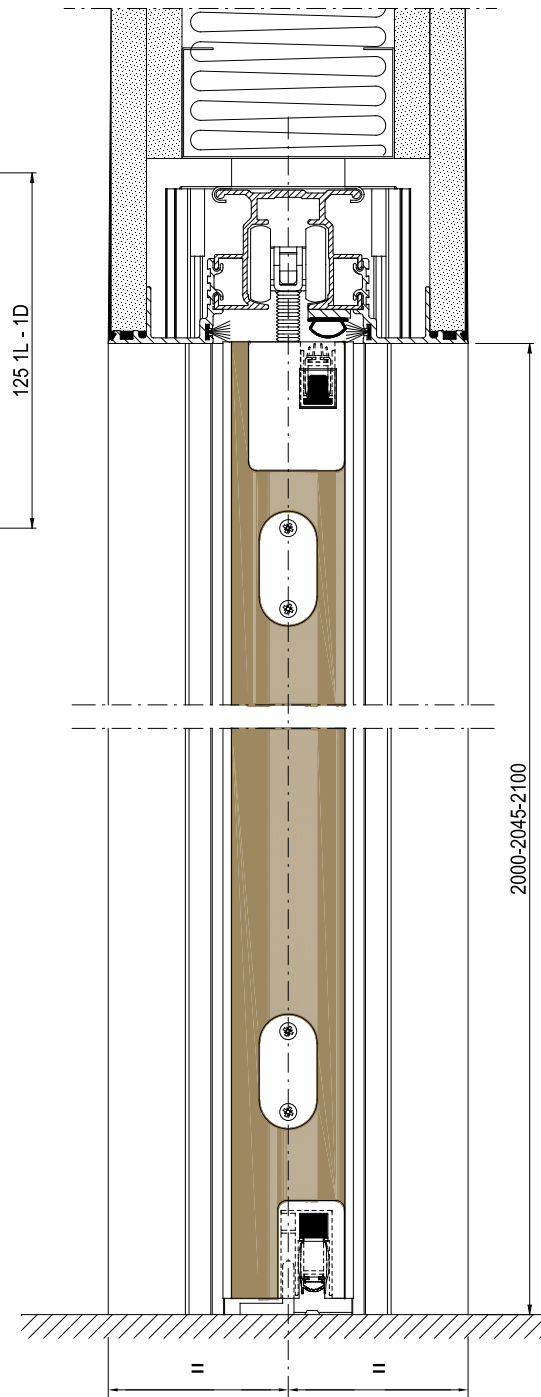


Costruzione flessibile standard. Parete in cartongesso a doppia lastra Sp.12,5 mm fissata a profili a U e C Sp.75 mm.  
 Con Lana di vetro Sp. 70 densità 50 Kg/m<sup>3</sup>  
 Construcción flexible estándar. Pared de cartón-yeso de doble placa Esp.12,5 mm fijada a perfiles en U y C Esp.75 mm.  
 Con lana de vidrio Esp. 70 densidad 50 kg/m<sup>3</sup>  
 Flexible Standardkonstruktion. Trockenbauwand mit doppelter Platte, Stärke 12,5 mm, befestigt an U- und C-Profilen, Stärke 75 mm. Mit Glaswolle, Stärke 70, Dichte 50 Kg/m<sup>3</sup>

Sezione A-A (125 1L)

Sección A-A (125 1L)

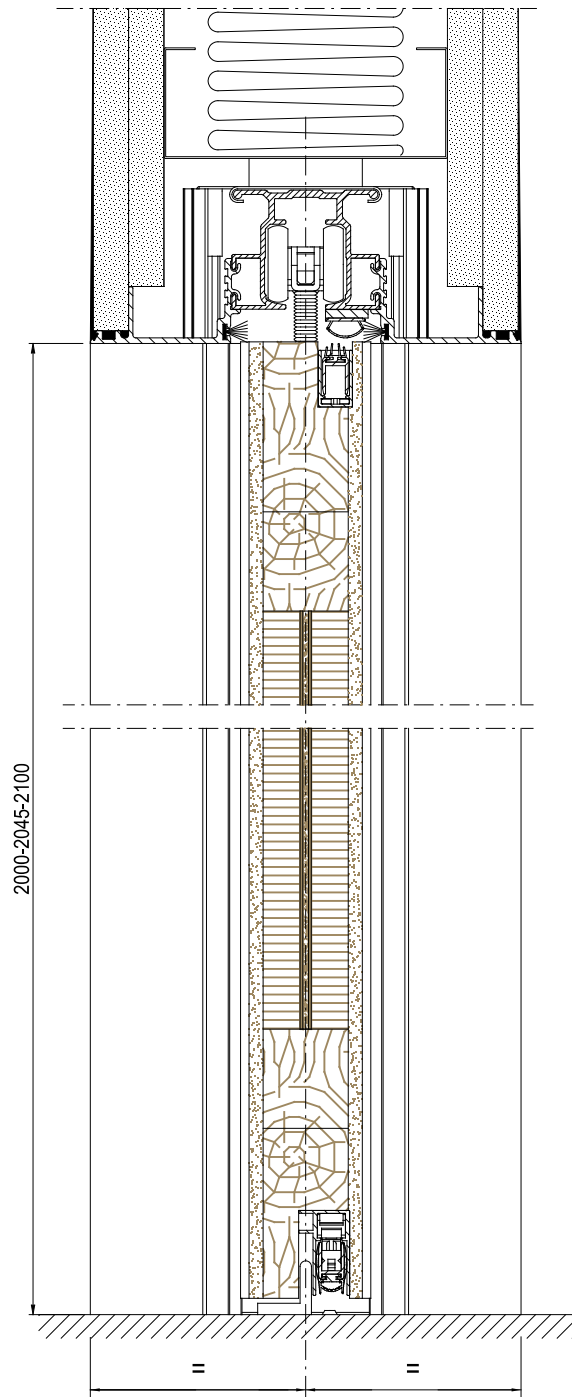
Querschnitt A-A (125 1L)



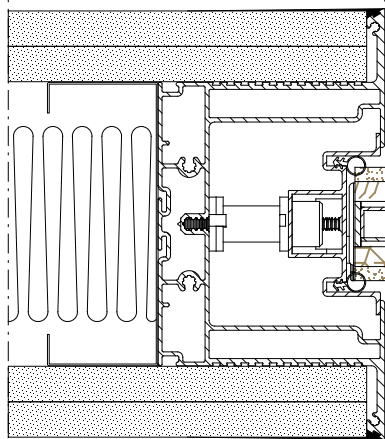
Sezione B-B (150 2L)

Sección B-B (150 2L)

Querschnitt B-B (150 2L)



Luce commerciale 600-700-800-900-1000  
 Luce effettiva 590-690-790-890-990  
 Hueco comercial 600-700-800-900-1000  
 Hueco real 590-690-790-890-990  
 Lichte gesamt 600-700-800-900-1000  
 Effektive Lichte 590-690-790-890-990

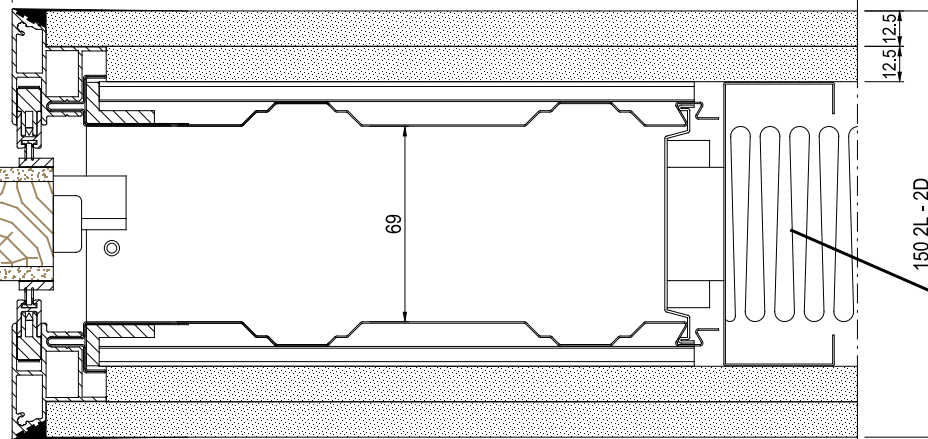


B  
 B

Sezione orizzontale 150 2L  
 porta chiusa

Sección horizontal 150 2L  
 puerta cerrada

Horizontaler Querschnitt 150 2L  
 Tür geschlossen



Costruzione flessibile standard. Parete in cartongesso a doppia lastra Sp.12,5 mm fissata a profili a U e C Sp.100 mm.  
 Con Lana di vetro Sp. 70 densità 50 Kg/m<sup>3</sup>  
 Construcción flexible estándar. Pared de cartón-yeso de doble placa Esp.12,5 mm fijada a perfiles en U y C Esp.100 mm.  
 Con lana de vidrio Esp. 70 densidad 50 kg/m<sup>3</sup>  
 Flexible Standardkonstruktion. Trockenbauwand mit doppelter Platte, Stärke 12,5 mm, befestigt an U- und C-Profilen, Stärke 100 mm. Mit Glaswolle, Stärke 70, Dichte 50 Kg/m<sup>3</sup>