

ASSEMBLY INSTRUCTIONS



BORRAMEO
FILOMURÒ



SECURITY DOORS

 **SCRIGNO**[®]

BORROMEO FILOMURO

Dear client,
Thank you for purchasing a Scrigno security door. Please follow the instructions given below to install your new security door.

GENERAL INFORMATION:

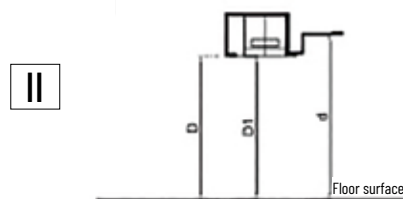
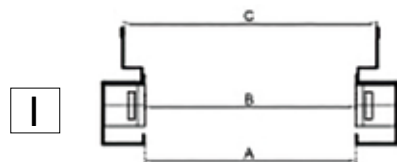
- Unpack the door carefully so as not to damage it.
- Do not use a box cutter or sharp tools to open the packaging.
- Take care when handling or storing the product.
- The standard supply (if the subframe has already been delivered) is composed of four packages: package 1 contains the door panel, while package 2 contains the box of hardware, package 3 the internal panel and package 4 the frame.
- The box of hardware contains: 10 M8X30 countersunk screws for mounting the frame to the subframe with 10 plastic caps for covering their heads, 4 M8x30 screws for mounting the hinges to the frame, 4 M6 x 10 captive bolts for adjusting the door panel horizontally, the inner handle, outer knob or handle, 2 painted folded panels for covering the frame hinges, the peephole, cylinder and opening limiter control (as applicable), the frame and door panel gasket, and the mounting screws for the internal panel.

PRELIMINARY SIZE CHECK

It is essential that you check the subframe's width (fig. I) dimensions A, B and C, taking care to measure the dimensions at 3 points (at the top, centre and bottom), its height (fig. II), d and D, and diagonals.

For a door with an opening of 2100 x 900 mm, the measurements should be

A = 952 mm
B = 952 mm
C = 992.6 mm
D = 2127.5 mm
D1 = 2127.5 mm
d = 2147.8 mm



Only after you have checked the measurements, install the subframe (to be done by the client), without removing the spacer welded to the subframe itself, using the cemented clamps, and screw them in with the M8x30 hex bolts with a fixed or n. 13 pipe wrench, using the dia. 10 mm holes in the subframe uprights next to the U-bolts (fig. III).

The brackets and screws are included with the subframe.

While installing the subframe, check that the uprights are vertical using a level with a tolerance of +/- 1 mm. Use the level to check that the top member of the subframe is horizontal to within +/- 1mm, as well as the floor in the area over which the door opens and closes. Since this is a flush mounting version, take special care when rendering the subframe plaster because the resulting surface will remain visible.



STEP 1. PREPARING THE SUBFRAME

Once the cement used to install the subframe has completely dried, remove the spacers welded to the subframe: use a hacksaw at 45° to the horizontal spacers to cut right through their centres, dividing them into two pieces, then remove the two sections by moving them vertically (top - bottom) until they come away. Use the same procedure to remove the two oblique spacers between the uprights and the cross member.

Clean all residue of mortar and plaster off the subframe and make sure that it still has the dimensions you checked before installing it.

Fit the threaded brackets into the subframe's U-bolts (fig.1).

If necessary, complete the internal plastering and paint work.

1

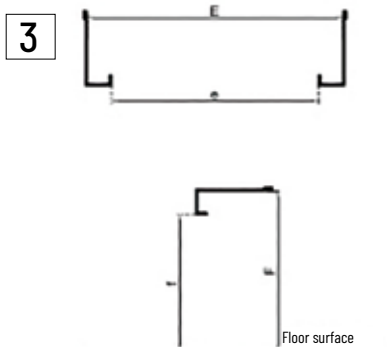


STEP 2. INSTALLING THE FRAME

First install the frame uprights to the threaded brackets on the subframe with the countersunk M8X30 screws (included in the box of hardware) with a 4 mm wrench. Insert the frame's cross member from the interior to the exterior and secure it to the subframe's threaded brackets.

Once the frame is mounted to the subframe, check its horizontal (e and E) and vertical (f and F) dimensions (fig. 3).

For a door with an opening of 2100 x 900 mm, the measurements should be



e = 900 mm
 E = 948 mm
 f = 2100 mm
 F = 2124 mm

N.B.

Improper levelling, torsion or significant dimensional differences can compromise the operation of the door.

STEP 3. FITTING THE DOOR PANEL INTO THE FRAME

Fit a 4 mm thick, 150 mm wide shim in mdf or cardboard next to the frame's hinge-side upright, perpendicular to the frame itself, then move the door panel up to it and place it on the shim at around 90° relative to the frame, rotate the door panel hinge and insert it via the cutaways in the frame's hinge upright (fig. 4).

Screw the M8 x 30 cylinder head studs (included) fully in but without torquing them (fig. 4a).

Slightly lift the door panel and remove the shim supporting it. Check that the door closes in such a way that the lock's bolt engages the frame and with the door panel closed there is a 6 mm clearance between the door panel and the frame. You can adjust the clearance with the included M6 captive bolts: undo the M8x30 studs and screw in the M6 bolts to move the door panel in the direction of the lock side frame upright.

Once the door panel is adjusted, tighten the M8x30 studs fully down (fig. 4b).

IMPORTANT:

with the door closed, check that there is a 9 mm clearance between the perimeter of the door panel carcass (without internal panel) and the internal plastering guide.

Close the door and check that the centre of the bolt is aligned with the centre of the hole in the frame; adjust the hinges up/down if necessary to achieve this.

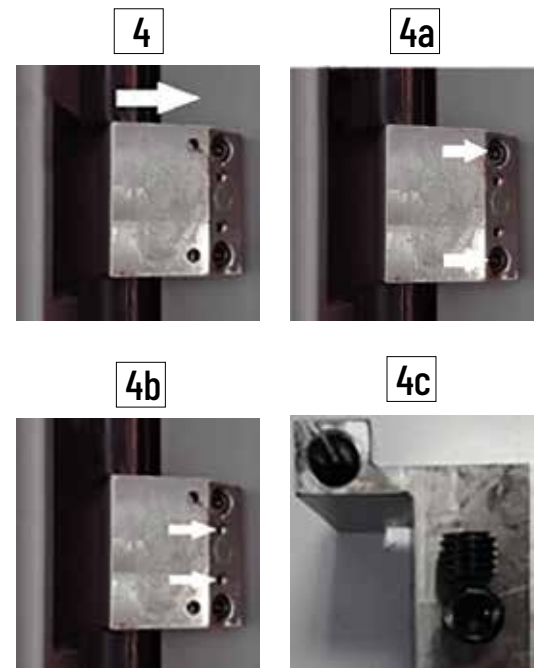
At the top of the hinges (the section welded to the door panel) there is an M12 threaded hole inside which are two M12x10 captive bolts (fig. 4c): undo the first one completely and remove it from the hinge, then use the second one to adjust the frame upwards (screw in) or downwards (screw out).

Once the door has been adjusted and you have checked that it closes completely by turning the lock all the way closed, restore the first captive bolt and screw it all the way in so that it locks the adjust bolt in place.

STEP 4. INSTALLING THE INTERNAL PANEL

With the door slightly open to around 20° relative to the frame, move the panel up to the carcass of the door panel by lifting it up and engaging it with the top of the door panel, then carefully press the panel in at the top and start securing it with the included screws, making sure that the panel is perfectly snug against the door panel and there are no bumps which could prevent the door from opening properly.

Proceed with equal care at the lock side, making sure that the entire panel is perfectly snug against the door panel carcass.



Keep the panel pressed in at the hinge side to ensure it does not collide with the plastering guide profile, and then finish securing the panel with the same care.

Slowly open the door and check that nothing is preventing it opening smoothly and cleanly.



STEP 5. INSTALLING THE ACCESSORIES

Install the included accessories (internal handle, opening limiter control if provided, peephole, external knob or handle).

Install the included gasket to the frame and door panel.

The cylinder is usually already installed in the lock, but if it is not, install it as follows:

- With the door open, unscrew - but do not remove - the screw on the lock side upright of the door panel next to the bolt (fig. 5) and press it towards the interior of the lock itself to release the lock's "Yale" hole from the cylinder retaining system (fig. 6 and fig. 6a).
- Keep holding the screw depressed and insert the cylinder (from the inside to the outside of the door), and use the key or knob to check that it operates.
- Once you have managed to give it at least one turn, release the screw and tighten it down (but not fully).
- Try turning the lock its full number of times, checking that the key rotates smoothly. If you can turn the lock all the way without difficulty, tighten the screw fully down. Unturn the lock completely and use the key or knob to check that you can also retract the bolt.
- With the door still open, try turning the lock fully from the outside as well.

5



6



6a



STEP 6. ADJUSTING THE DOOR

Close the door and check that it does not vibrate and is perfectly snug against the frame when closed. If necessary, adjust the bolt register by slackening off the M6 screw with a 4 mm hex key. Once the closure is properly adjusted, tighten down the central screw (fig. 9).

Now check once more that the door works properly by closing it and turning the lock fully closed.

9





BORROMEO FILOMURO

STEP 7. FINAL STEP

Clean all the door's components with a non-abrasive cloth dampened with water and a dry cloth.

Adjust the lowering of the draught bar with the screw (fig. 10): unscrewing it increases its travel so that the bar lowers further, so that the gasket is completely sealed against the floor.

Complete the assembly by using a spot of silicone adhesive to glue the painted panels over the hinges (fig. 11a) and fit the included plastic caps to the heads of the countersunk M8x30 screws (fig. 11).

10



11



11a



N.B.

if the door has a double cylinder lock, the cylinders are not installed with the screw as described above, but using a cradle-type mounting (fig. 12). To access the cylinder mounting points, remove the cylinder's internal finish plate and remove the plastic panel underneath it (fig. 13).

Gradually undo the two cradle mounting screws with a 6 mm wrench (fig. 14); these screws also secure the cylinder guard, so before you completely remove them you must extract the guard and any shims to prevent them falling inside the door panel.

Take out the screws and the cradle. Turn the key a quarter turn so that the cylinder rod retracts into the cylinder (fig. 15) and remove the cylinder itself. Undo the cradle mounting screw (fig. 16).

Restore the cylinder in reverse order to the above.

12



13



14



15



16



- if the door has an electromechanical lock, the cylinders are not installed with the screw as described above, but using a cradle-type mounting (fig. 17). To access the cylinder mounting points, remove the cylinder's internal finish plate and remove the plastic panel underneath it (fig. 13). Undo the two cradle mounting screws with a 2.5 mm wrench (fig. 18). Turn the key a quarter turn so that the cylinder rod retracts into the cylinder (fig. 19) and remove the cylinder and cradle. Undo the cradle screw securing the cylinder (fig. 20) with a 3 mm wrench. Restore the cylinder in reverse order to the above.

- If the door has a cylinder equipped for an internal thumb turn, the cylinder is not installed in the lock but is included in the box of accessories. Install it following the instructions given in step 4 or in the preceding paragraph. Once the cylinder has been installed, the length of the internal shank must be adjusted by cutting it with a hacksaw (we recommend measuring it and cutting the shank with the cylinder extracted from its mounted position).

- All cylinders have an installer key and 5 user keys. To switch from the installer key to the user key, proceed as follows: with the door open, fit a user key into the external keyhole, turn the lock fully closed and then fully open again and extract the key. The installer key will no longer work at this point. Repeat the same operation from the inside (if the cylinder is not fitted with a thumb turn).

- Threshold: the threshold is composed of two parts. The first, which has three gaskets, is already installed to the door panel, while the other part must be installed to the floor.

Once you have completed step 6 (final step), you must adjust the length of the floor section by cutting the aluminium member with shears or a hacksaw (cut to the open width of the door -2mm), then fit the two included black plastic caps (fig. 21).

To install the threshold to the floor, remove the upper aluminium section and use the included anchor bolts or, if you prefer, polyurethane adhesive, making sure that the threshold is flush with the outside of the frame (fig. 22), and fit the upper section again.

- if the door is equipped with an electromechanical lock, appropriate instructions are provided with the door.

17



18



19



20



21



22





www.scrigno.net